



**ELECTRONIC COPY**

705548070  
Report verification at [igi.org](http://igi.org)



July 23, 2025

IGI Report Number **705548070**

Description **NATURAL DIAMOND**

Shape and Cutting Style **EMERALD CUT**

Measurements **10.03 X 7.19 X 4.97 MM**

**GRADING RESULTS**

Carat Weight **3.78 CARATS**

Color Grade **H**

Clarity Grade **VS 2**

Cut Grade **VERY GOOD**

**DIAMOND REPORT**

July 23, 2025

IGI Report Number **705548070**

Description **NATURAL DIAMOND**

Shape and Cutting Style **EMERALD CUT**

Measurements **10.03 X 7.19 X 4.97 MM**

**GRADING RESULTS**

Carat Weight **3.78 CARATS**

Color Grade **H**

Clarity Grade **VS 2**

Cut Grade **VERY GOOD**

**ADDITIONAL GRADING INFORMATION**

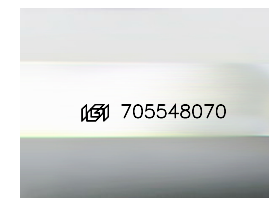
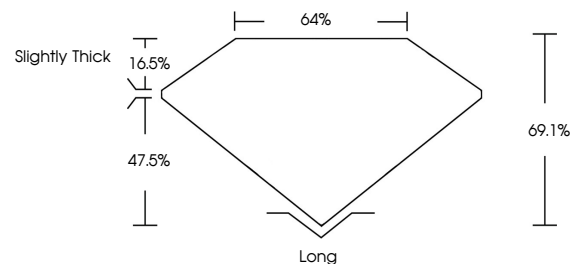
Polish **EXCELLENT**

Symmetry **EXCELLENT**

Fluorescence **NONE**

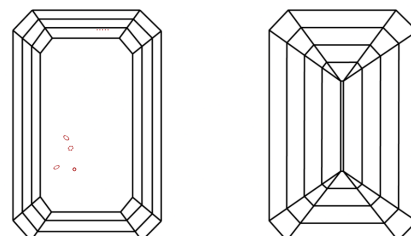
Inscription(s) **705548070**

**PROPORTIONS**



Sample Image Used

**CLARITY CHARACTERISTICS**



**KEY TO SYMBOLS**

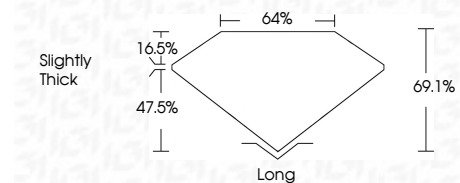
Red symbols indicate internal characteristics.  
Green symbols indicate external characteristics.

**COLOR**

D - F	G - J	K - M	N - R	S - Z	FANCY
Colorless	Near Colorless	Slightly Tinted	Very Light Color	Light Color	

**CLARITY**

IF	VVS <sup>1-2</sup>	VS <sup>1-2</sup>	SI <sup>1-2</sup>	I <sup>1-3</sup>
Internally Flawless	Very Very Slightly Included	Very Slightly Included	Slightly Included	Included



**ADDITIONAL GRADING INFORMATION**

Polish **EXCELLENT**

Symmetry **EXCELLENT**

Fluorescence **NONE**

Inscription(s) **705548070**



**IGI**



July 23, 2025	3.78 CARATS	H	VS 2	64%	64%	Slightly Thick	Long
IGI Report No 705548070	EXCELLENT	EXCELLENT	EXCELLENT	EXCELLENT	EXCELLENT	EXCELLENT	EXCELLENT
EMERALD CUT	10.03 X 7.19 X 4.97 MM	VERY GOOD	VERY GOOD	VERY GOOD	VERY GOOD	VERY GOOD	NONE
Carat Weight	Color Grade	Clarity Grade	Cut Grade	Table	Depth	Girdle	Long
Polish	Symmetry	Fluorescence	Inscription(s)				