



**INTERNATIONAL  
GEMOLOGICAL  
INSTITUTE**

**DIAMOND REPORT**

July 17, 2025  
IGI Report Number **705538578**  
Description **NATURAL DIAMOND**  
Shape and Cutting Style **ROUND BRILLIANT**  
Measurements **6.17 - 6.22 X 3.84 MM**

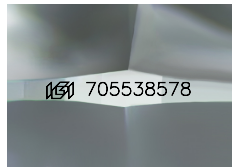
**GRADING RESULTS**

Carat Weight **0.90 CARAT**  
Color Grade **D**  
Clarity Grade **INTERNALLY FLAWLESS**  
Cut Grade **EXCELLENT**

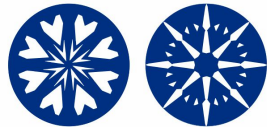
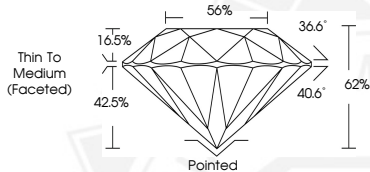
**ADDITIONAL GRADING INFORMATION**

Polish **EXCELLENT**  
Symmetry **EXCELLENT**  
Fluorescence **NONE**  
Inscription(s) **IGI 705538578**  
Comments: HEARTS & ARROWS

**ELECTRONIC COPY**



Sample Image Used



**HEARTS & ARROWS**



July 17, 2025  
IGI Report Number **705538578**  
**ROUND BRILLIANT**  
**NATURAL DIAMOND**  
**6.17 - 6.22 X 3.84 MM**  
Carat Weight **0.90 CARAT**  
Color Grade **D**  
Clarity Grade **I.F.**  
Cut Grade **EXCELLENT**  
Polish **EXCELLENT**  
Symmetry **EXCELLENT**  
Fluorescence **NONE**  
Inscription(s) **IGI 705538578**  
Comments: HEARTS & ARROWS



July 17, 2025  
IGI Report Number **705538578**  
**ROUND BRILLIANT**  
**NATURAL DIAMOND**  
**6.17 - 6.22 X 3.84 MM**  
Carat Weight **0.90 CARAT**  
Color Grade **D**  
Clarity Grade **I.F.**  
Cut Grade **EXCELLENT**  
Polish **EXCELLENT**  
Symmetry **EXCELLENT**  
Fluorescence **NONE**  
Inscription(s) **IGI 705538578**  
Comments: HEARTS & ARROWS



THIS DOCUMENT WAS PRODUCED WITH THE FOLLOWING SECURITY MEASURES: SPECIAL DOCUMENT PAPER, INK SCREENS, WATERMARK, BACKGROUND DESIGNS, HOLOGRAM AND OTHER SECURITY FEATURES NOT LISTED AND DO EXCEED DOCUMENT SECURITY INDUSTRY GUIDELINES.

For terms & conditions and to verify this report, please visit [www.igi.org](http://www.igi.org)