



# INTERNATIONAL GEMOLOGICAL INSTITUTE

## DIAMOND REPORT

May 16, 2025  
IGI Report Number **704564801**  
Description **NATURAL DIAMOND**  
Shape and Cutting Style **ROUND BRILLIANT**  
Measurements **4.67 - 4.69 X 2.95 MM**

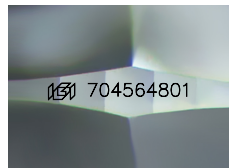
### GRADING RESULTS

Carat Weight **0.40 CARAT**  
Color Grade **J**  
Clarity Grade **VS 2**  
Cut Grade **EXCELLENT**

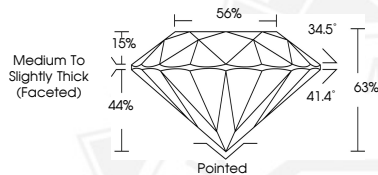
### ADDITIONAL GRADING INFORMATION

Polish **EXCELLENT**  
Symmetry **EXCELLENT**  
Fluorescence **NONE**  
Identification Features **FEATHER, CLOUD**  
Inscription(s) **IGI 704564801**

ELECTRONIC COPY



Sample Image Used



May 16, 2025  
IGI Report Number **704564801**  
ROUND BRILLIANT  
NATURAL DIAMOND  
**4.67 - 4.69 X 2.95 MM**  
Carat Weight **0.40 CARAT**  
Color Grade **J**  
Clarity Grade **VS 2**  
Cut Grade **EXCELLENT**  
Polish **EXCELLENT**  
Symmetry **EXCELLENT**  
Fluorescence **NONE**  
Inscription(s) **IGI 704564801**



May 16, 2025  
IGI Report Number **704564801**  
ROUND BRILLIANT  
NATURAL DIAMOND  
**4.67 - 4.69 X 2.95 MM**  
Carat Weight **0.40 CARAT**  
Color Grade **J**  
Clarity Grade **VS 2**  
Cut Grade **EXCELLENT**  
Polish **EXCELLENT**  
Symmetry **EXCELLENT**  
Fluorescence **NONE**  
Inscription(s) **IGI 704564801**



THIS DOCUMENT WAS PRODUCED WITH THE FOLLOWING SECURITY MEASURES: SPECIAL DOCUMENT PAPER, INK SCREENS, WATERMARK, BACKGROUND DESIGNS, HOLOGRAM AND OTHER SECURITY FEATURES NOT LISTED AND DO EXCEED DOCUMENT SECURITY INDUSTRY GUIDELINES.

For terms & conditions and to verify this report, please visit [www.igi.org](http://www.igi.org)