



# INTERNATIONAL GEMOLOGICAL INSTITUTE

ELECTRONIC COPY

## DIAMOND REPORT

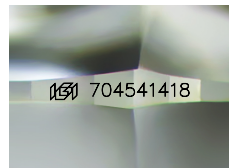
May 13, 2025  
IGI Report Number **704541418**  
Description **NATURAL DIAMOND**  
Shape and Cutting Style **ROUND BRILLIANT**  
Measurements **5.35 - 5.40 X 3.31 MM**

### GRADING RESULTS

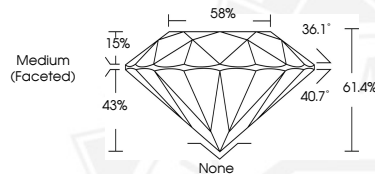
Carat Weight **0.60 CARAT**  
Color Grade **I**  
Clarity Grade **VS 2**  
Cut Grade **EXCELLENT**

### ADDITIONAL GRADING INFORMATION

Polish **EXCELLENT**  
Symmetry **EXCELLENT**  
Fluorescence **NONE**  
Identification Features **CRYSTAL, FEATHER, CLOUD**  
Inscription(s) **(IGI) 704541418**  
Comments: IDEAL CUT ROUND BRILLIANT



Sample Image Used



May 13, 2025  
IGI Report Number **704541418**  
ROUND BRILLIANT  
NATURAL DIAMOND  
5.35 - 5.40 X 3.31 MM  
Carat Weight **0.60 CARAT**  
Color Grade **I**  
Clarity Grade **VS 2**  
Cut Grade **EXCELLENT**  
Polish **EXCELLENT**  
Symmetry **EXCELLENT**  
Fluorescence **NONE**  
Inscription(s) **(IGI) 704541418**  
Comments: IDEAL CUT ROUND BRILLIANT



May 13, 2025  
IGI Report Number **704541418**  
ROUND BRILLIANT  
NATURAL DIAMOND  
5.35 - 5.40 X 3.31 MM  
Carat Weight **0.60 CARAT**  
Color Grade **I**  
Clarity Grade **VS 2**  
Cut Grade **EXCELLENT**  
Polish **EXCELLENT**  
Symmetry **EXCELLENT**  
Fluorescence **NONE**  
Inscription(s) **(IGI) 704541418**  
Comments: IDEAL CUT ROUND BRILLIANT



THIS DOCUMENT WAS PRODUCED WITH THE FOLLOWING SECURITY MEASURES: SPECIAL DOCUMENT PAPER, INK SCREENS, WATERMARK, BACKGROUND DESIGN, HOLOGRAM AND OTHER SECURITY FEATURES NOT LISTED AND DO EXCEED DOCUMENT SECURITY INDUSTRY GUIDELINES.

For terms & conditions and to verify this report, please visit [www.igi.org](http://www.igi.org)