



# INTERNATIONAL GEMOLOGICAL INSTITUTE

## DIAMOND REPORT

May 9, 2025  
IGI Report Number **702531981**  
Description **NATURAL DIAMOND**  
Shape and Cutting Style **ROUND BRILLIANT**  
Measurements **5.65 - 5.67 X 3.54 MM**

### GRADING RESULTS

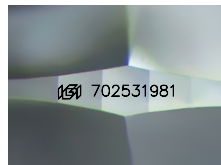
Carat Weight **0.70 CARAT**  
Color Grade **J**  
Clarity Grade **VVS 2**  
Cut Grade **EXCELLENT**

### ADDITIONAL GRADING INFORMATION

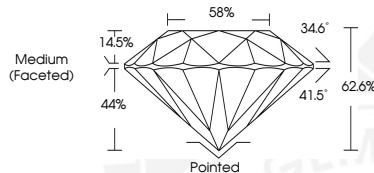
Polish **EXCELLENT**  
Symmetry **EXCELLENT**  
Fluorescence **NONE**  
Identification Features **PINPOINT**  
Inscription(s) **(IGI) 702531981**



ELECTRONIC COPY



Sample Image Used



May 9, 2025  
IGI Report Number **702531981**  
ROUND BRILLIANT  
NATURAL DIAMOND  
5.65 - 5.67 X 3.54 MM  
Carat Weight **0.70 CARAT**  
Color Grade **J**  
Clarity Grade **VVS 2**  
Cut Grade **EXCELLENT**  
Polish **EXCELLENT**  
Symmetry **EXCELLENT**  
Fluorescence **NONE**  
Inscription(s) **(IGI) 702531981**



May 9, 2025  
IGI Report Number **702531981**  
ROUND BRILLIANT  
NATURAL DIAMOND  
5.65 - 5.67 X 3.54 MM  
Carat Weight **0.70 CARAT**  
Color Grade **J**  
Clarity Grade **VVS 2**  
Cut Grade **EXCELLENT**  
Polish **EXCELLENT**  
Symmetry **EXCELLENT**  
Fluorescence **NONE**  
Inscription(s) **(IGI) 702531981**



THIS DOCUMENT WAS PRODUCED WITH THE FOLLOWING SECURITY MEASURES: SPECIAL DOCUMENT PAPER, INK SCREENS, WATERMARK, BACKGROUND DESIGNS, HOLOGRAM AND OTHER SECURITY FEATURES NOT LISTED AND DO EXCEED DOCUMENT SECURITY INDUSTRY GUIDELINES.

For terms & conditions and to verify this report, please visit [www.igi.org](http://www.igi.org)