

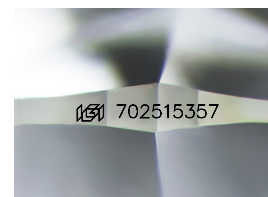
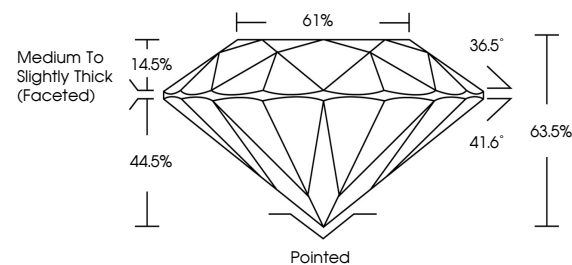


ELECTRONIC COPY

DIAMOND REPORT

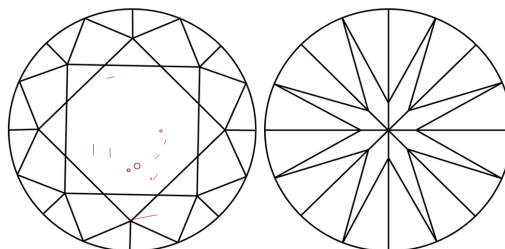
702515357
Report verification at igi.org

PROPORTIONS



Sample Image Used

CLARITY CHARACTERISTICS



KEY TO SYMBOLS

Red symbols indicate internal characteristics.
Green symbols indicate external characteristics.

COLOR

D - F	G - J	K - M	N - R	S - Z	FANCY
Colorless	Near Colorless	Slightly Tinted	Very Light Color	Light Color	

CLARITY

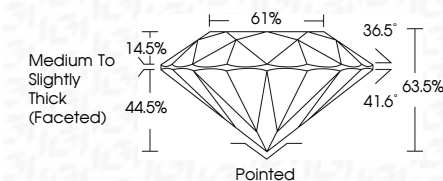
IF	VVS ¹⁻²	VS ¹⁻²	SI ¹⁻²	I ¹⁻³
Internally Flawless	Very Very Slightly Included	Very Slightly Included	Slightly Included	Included



April 29, 2025	
IGI Report Number	702515357
Description	NATURAL DIAMOND
Shape and Cutting Style	ROUND BRILLIANT
Measurements	9.02 - 9.12 X 5.77 MM

GRADING RESULTS

Carat Weight	3.01 CARATS
Color Grade	I
Clarity Grade	SI 1
Cut Grade	EXCELLENT



ADDITIONAL GRADING INFORMATION

Polish	EXCELLENT
Symmetry	VERY GOOD
Fluorescence	NONE
Inscription(s)	(63) 702515357



© IGI 2020, International Gemological Institute

FD - 10 20

www.igi.org



THIS DOCUMENT WAS PRODUCED WITH THE FOLLOWING SECURITY MEASURES: SPECIAL DOCUMENT PAPER, INK SCREENS, WATERMARK, BACKGROUND DESIGNS, HOLOGRAM AND OTHER SECURITY FEATURES NOT LISTED AND DO EXCEED DOCUMENT SECURITY INDUSTRY GUIDELINES

April 29, 2025
GI Report No 702515357
ROUND BRILLIANT

0.02 - 9.12 X 5.77 MM	3.01 CARATS	
Carat Weight	\$11	
Color Grade	EXCELLENT	
Cut Grade	63.6%	
Depth	61%	
Table	Medium To Slightly Thick (Faceted)	
Grain		
Cleat	Pointed	
Polish	EXCELLENT	
Symmetry	VERY GOOD	
Fluorescence	NONE	
Comments(s)	see 707011557	