



ELECTRONIC COPY

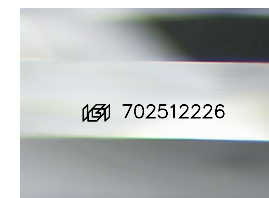
702512226
Report verification at igi.org



May 10, 2025
IGI Report Number **702512226**
Description **NATURAL DIAMOND**
Shape and Cutting Style **OLD MINE BRILLIANT**
Measurements **5.75 X 5.24 X 4.30 MM**

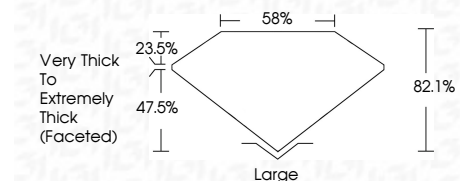
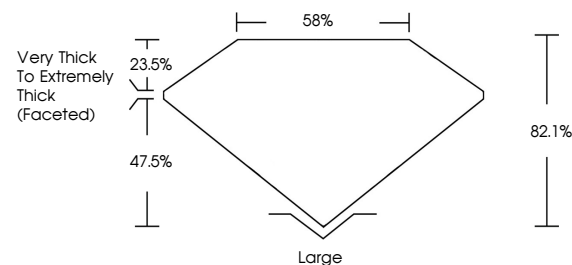
GRADING RESULTS

Carat Weight **1.00 CARAT**
Color Grade **M**
Clarity Grade **SI 1**

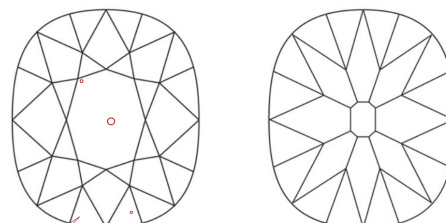


Sample Image Used

PROPORTIONS



CLARITY CHARACTERISTICS



KEY TO SYMBOLS

Red symbols indicate internal characteristics.
Green symbols indicate external characteristics.

COLOR

| D - F | G - J | K - M | N - R | S - Z | FANCY |
|-----------|----------------|-----------------|------------------|-------------|-------|
| Colorless | Near Colorless | Slightly Tinted | Very Light Color | Light Color | |

CLARITY

| IF | VVS ¹⁻² | VS ¹⁻² | SI ¹⁻² | I ¹⁻³ |
|---------------------|-----------------------------|------------------------|-------------------|------------------|
| Internally Flawless | Very Very Slightly Included | Very Slightly Included | Slightly Included | Included |

ADDITIONAL GRADING INFORMATION

Polish **VERY GOOD**
Symmetry **VERY GOOD**
Fluorescence **NONE**
Inscription(s) **(IGI) 702512226**



IGI

May 10, 2025
IGI Report No 702512226
OLD MINE BRILLIANT
5.75 X 5.24 X 4.30 MM
1.00 CARAT
M
SI 1
82.1%
85%
Very Thick to Extremely Thick (Faceted)
Large
VERY GOOD
VERY GOOD
NONE
(IGI) 702512226