



ELECTRONIC COPY

700526347
Report verification at igi.org

DIAMOND REPORT

April 26, 2025
IGI Report Number **700526347**
Description **NATURAL DIAMOND**
Shape and Cutting Style **PRINCESS CUT**
Measurements **5.38 X 5.34 X 3.91 MM**

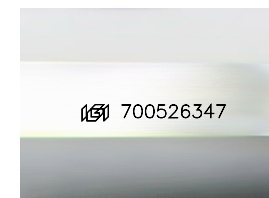
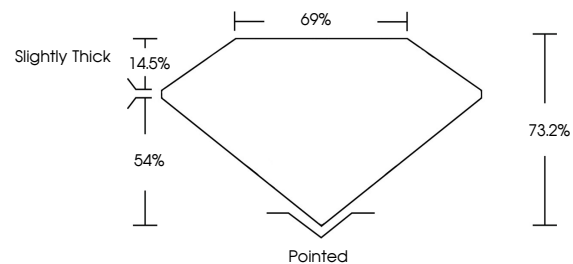
GRADING RESULTS

Carat Weight **1.01 CARAT**
Color Grade **H**
Clarity Grade **VVS 1**
Cut Grade **VERY GOOD**

ADDITIONAL GRADING INFORMATION

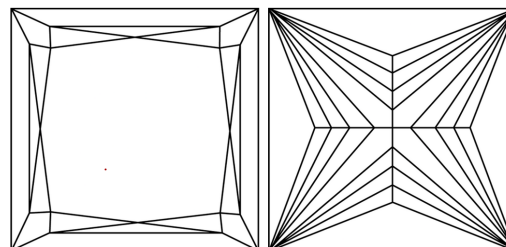
Polish **EXCELLENT**
Symmetry **EXCELLENT**
Fluorescence **NONE**
Inscription(s) **700526347**

PROPORTIONS



Sample Image Used

CLARITY CHARACTERISTICS



KEY TO SYMBOLS

Red symbols indicate internal characteristics.
Green symbols indicate external characteristics.

COLOR

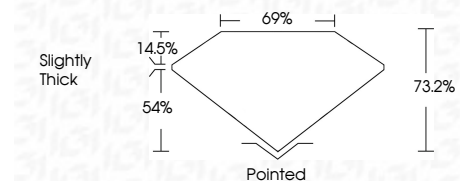
D - F	G - J	K - M	N - R	S - Z	FANCY
Colorless	Near Colorless	Slightly Tinted	Very Light Color	Light Color	

CLARITY

IF	VVS ¹⁻²	VS ¹⁻²	SI ¹⁻²	I ¹⁻³
Internally Flawless	Very Very Slightly Included	Very Slightly Included	Slightly Included	Included



April 26, 2025
IGI Report Number **700526347**
Description **NATURAL DIAMOND**
Shape and Cutting Style **PRINCESS CUT**
Measurements **5.38 X 5.34 X 3.91 MM**
GRADING RESULTS
Carat Weight **1.01 CARAT**
Color Grade **H**
Clarity Grade **VVS 1**
Cut Grade **VERY GOOD**



ADDITIONAL GRADING INFORMATION

Polish **EXCELLENT**
Symmetry **EXCELLENT**
Fluorescence **NONE**
Inscription(s) **700526347**



IGI



April 26, 2025
IGI Report No 700526347
PRINCESS CUT
5.38 X 5.34 X 3.91 MM
1.01 CARAT H
Color Grade VVS 1
Clarity Grade VERY GOOD
Depth 73.2%
Table 69%
Girdle Slightly Thick
Culet Pointed
Polish EXCELLENT
Symmetry EXCELLENT
Fluorescence NONE
Inscriptions(s) 700526347