



ELECTRONIC COPY

DIAMOND REPORT

September 2, 2025	
IGI Report Number	698539706
Description	NATURAL DIAMOND
Shape and Cutting Style	ROUND BRILLIANT
Measurements	8.03 - 8.09 X 5.04 MM

GRADING RESULTS

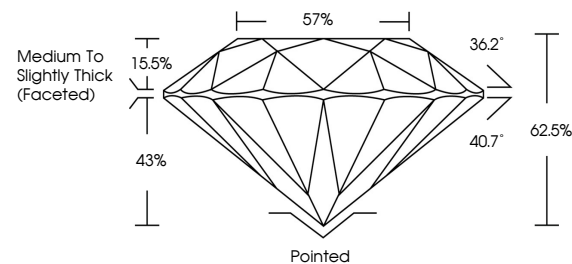
Carat Weight	2.04 CARATS
Color Grade	I
Clarity Grade	VS 1
Cut Grade	EXCELLENT

ADDITIONAL GRADING INFORMATION

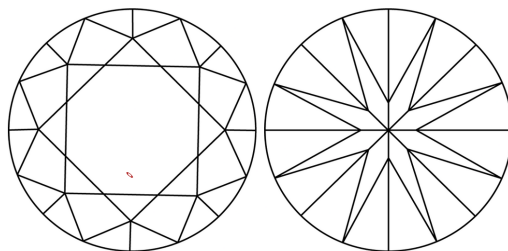
Polish	EXCELLENT
Symmetry	EXCELLENT
Fluorescence	NONE
Inscription(s)	 698539706
Comments: IDEAL CUT ROUND BRILLIANT	

698539706
Report verification at igi.org

PROPORTIONS

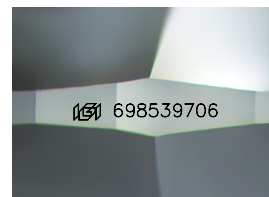


CLARITY CHARACTERISTICS



KEY TO SYMBOLS

Red symbols indicate internal characteristics.
Green symbols indicate external characteristics.



Sample Image Used

COLOR

D - F	G - J	K - M	N - R	S - Z	FANCY
Colorless	Near Colorless	Slightly Tinted	Very Light Color	Light Color	

CLARITY

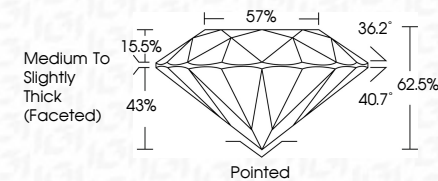
IF	VVS ¹⁻²	VS ¹⁻²	SI ¹⁻²	I ¹⁻³
Internally Flawless	Very Very Slightly Included	Very Slightly Included	Slightly Included	Included



September 2, 2025	
IGI Report Number	698539706
Description	NATURAL DIAMOND
Shape and Cutting Style	ROUND BRILLIANT
Measurements	8.03 - 8.09 X 5.04 MM

GRADING RESULTS

Carat Weight	2.04 CARATS
Color Grade	I
Clarity Grade	VS 1
Cut Grade	EXCELLENT



ADDITIONAL GRADING INFORMATION

Polish	EXCELLENT
Symmetry	EXCELLENT
Fluorescence	NONE
Inscription(s)	(G) 698539706
Comments: IDEAL CUT ROUND BRILLIANT	



IGI



© IGI 2020, International Gemological Institute

FD - 10 20



THIS DOCUMENT WAS PRODUCED WITH THE FOLLOWING SECURITY MEASURES: SPECIAL DOCUMENT PAPER, INK SCREENS, WATERMARK, BACKGROUND DESIGNS, HOLOGRAM AND OTHER SECURITY FEATURES NOT LISTED AND DO EXCEED DOCUMENT SECURITY INDUSTRY GUIDELINES

September 2, 2025
IGI Report No 698539706
ROUND BRILLIANT

8.03 - 8.05 X 5.04 MM	2.04 CARATS
Carat Weight	
Color Grade	
Clarity Grade	VS1
Cut Grade	EXCELLENT
Depth	62.5%
Table	57%
Grade	Medium to Slightly Thick (Faced)
Culet	Pointed
Polish	EXCELLENT
Symmetry	EXCELLENT
Fluorescence	NONE
Inscriptions(s)	see 698392076

Comments:
IDEAL CUT ROUND BRILLIANT