



DIAMOND REPORT      **ELECTRONIC COPY**

697502918

April 27, 2025  
IGI Report Number      697502918  
Description      NATURAL DIAMOND  
Shape and Cutting Style      ROUND BRILLIANT  
Measurements      7.28 - 7.35 x 4.56 mm

GRADING RESULTS

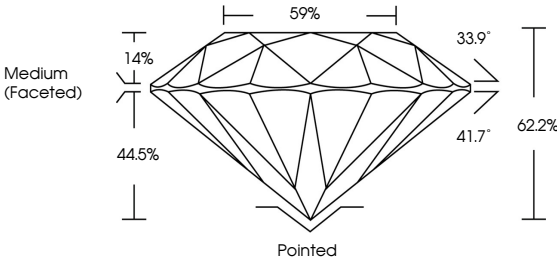
Carat Weight      1.50 CARAT  
Color Grade      I  
Clarity Grade      VS 1  
Cut Grade      EXCELLENT

ADDITIONAL GRADING INFORMATION

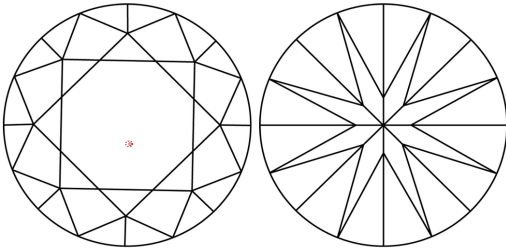
Polish      EXCELLENT  
Symmetry      EXCELLENT  
Fluorescence      NONE  
Inscription(s)      697502918



PROPORTIONS

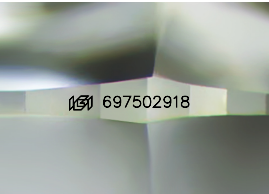


CLARITY CHARACTERISTICS



KEY TO SYMBOLS

Red symbols indicate internal characteristics.  
Green symbols indicate external characteristics.



Sample Image Used

COLOR

D - F	G - J	K - M	N - R	S - Z	FANCY
Colorless	Near Colorless	Slightly Tinted	Very Light Color	Light Color	

CLARITY

IF	VS <sup>1-2</sup>	VS <sup>1-2</sup>	SI <sup>1-2</sup>	I <sup>1-3</sup>
Internally Flawless	Very Very Slightly Included	Very Slightly Included	Slightly Included	Included



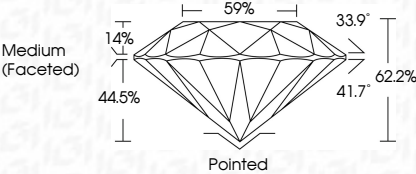
DIAMOND REPORT



April 27, 2025  
IGI Report Number      697502918  
Description      NATURAL DIAMOND  
Shape and Cutting Style      ROUND BRILLIANT  
Measurements      7.28 - 7.35 x 4.56 mm

GRADING RESULTS

Carat Weight      1.50 CARAT  
Color Grade      I  
Clarity Grade      VS 1  
Cut Grade      EXCELLENT




ADDITIONAL GRADING INFORMATION

Polish      EXCELLENT  
Symmetry      EXCELLENT  
Fluorescence      NONE  
Inscription(s)      697502918



IGI

April 27, 2025	IGI Report No 697502918	NATURAL DIAMOND	ROUND BRILLIANT	7.28 - 7.35 x 4.56 mm	1.50 CARAT	I	VS 1	EXCELLENT	EXCELLENT	EXCELLENT	NONE	 697502918				
					Carat Weight	Color Grade	Clarity Grade	Cut Grade	Depth	Table	Girdle	Culet	Polish	Symmetry	Fluorescence	Inscription(s)