



# INTERNATIONAL GEMOLOGICAL INSTITUTE

## DIAMOND REPORT

May 2, 2025  
IGI Report Number **696592484**  
Description **NATURAL DIAMOND**  
Shape and Cutting Style **ROUND BRILLIANT**  
Measurements **6.15 - 6.20 X 3.72 MM**

## GRADING RESULTS

Carat Weight **0.85 CARAT**  
Color Grade **E**  
Clarity Grade **SI 2**  
Cut Grade **EXCELLENT**

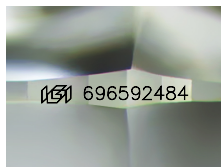
## ADDITIONAL GRADING INFORMATION

Polish **EXCELLENT**  
Symmetry **EXCELLENT**  
Fluorescence **SLIGHT**  
Identification Features **FEATHER, CRYSTAL CLOUD**  
Inscription(s) **(IGI) 696592484**

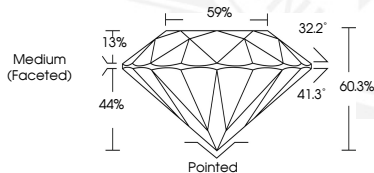
Comments: Laser drill hole present.

ELECTRONIC COPY

696592484



Sample Image Used



May 2, 2025  
IGI Report Number **696592484**  
ROUND BRILLIANT  
NATURAL DIAMOND  
6.15 - 6.20 X 3.72 MM  
Carat Weight **0.85 CARAT**  
Color Grade **E**  
Clarity Grade **SI 2**  
Cut Grade **EXCELLENT**  
Polish **EXCELLENT**  
Symmetry **EXCELLENT**  
Fluorescence **SLIGHT**  
Inscription(s) **(IGI) 696592484**  
Comments: Laser drill hole present.



May 2, 2025  
IGI Report Number **696592484**  
ROUND BRILLIANT  
NATURAL DIAMOND  
6.15 - 6.20 X 3.72 MM  
Carat Weight **0.85 CARAT**  
Color Grade **E**  
Clarity Grade **SI 2**  
Cut Grade **EXCELLENT**  
Polish **EXCELLENT**  
Symmetry **EXCELLENT**  
Fluorescence **SLIGHT**  
Inscription(s) **(IGI) 696592484**  
Comments: Laser drill hole present.



THIS DOCUMENT WAS PRODUCED WITH THE FOLLOWING SECURITY MEASURES: SPECIAL DOCUMENT PAPER, INK SCREENS, WATERMARK, BACKGROUND DESIGNS, HOLOGRAM AND OTHER SECURITY FEATURES NOT LISTED AND DO EXCEED DOCUMENT SECURITY INDUSTRY GUIDELINES.

For terms & conditions and to verify this report, please visit [www.igi.org](http://www.igi.org)