



INTERNATIONAL GEMOLOGICAL INSTITUTE

DIAMOND REPORT

April 22, 2025
IGI Report Number **695512206**
Description **NATURAL DIAMOND**
Shape and Cutting Style **ROUND BRILLIANT**
Measurements **6.13 - 6.17 X 3.83 MM**

GRADING RESULTS

Carat Weight **0.90 CARAT**
Color Grade **J**
Clarity Grade **SI 1**
Cut Grade **EXCELLENT**

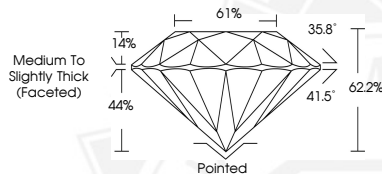
ADDITIONAL GRADING INFORMATION

Polish **EXCELLENT**
Symmetry **EXCELLENT**
Fluorescence **NONE**
Identification Features **FEATHER, CLOUD**
Inscription(s) **IGI 695512206**

ELECTRONIC COPY



Sample Image Used



April 22, 2025
IGI Report Number **695512206**
ROUND BRILLIANT
NATURAL DIAMOND
6.13 - 6.17 X 3.83 MM
Carat Weight **0.90 CARAT**
Color Grade **J**
Clarity Grade **SI 1**
Cut Grade **EXCELLENT**
Polish **EXCELLENT**
Symmetry **EXCELLENT**
Fluorescence **NONE**
Inscription(s) **IGI 695512206**



April 22, 2025
IGI Report Number **695512206**
ROUND BRILLIANT
NATURAL DIAMOND
6.13 - 6.17 X 3.83 MM
Carat Weight **0.90 CARAT**
Color Grade **J**
Clarity Grade **SI 1**
Cut Grade **EXCELLENT**
Polish **EXCELLENT**
Symmetry **EXCELLENT**
Fluorescence **NONE**
Inscription(s) **IGI 695512206**



THIS DOCUMENT WAS PRODUCED WITH THE FOLLOWING SECURITY MEASURES: SPECIAL DOCUMENT PAPER, INK SCREENS, WATERMARK, BACKGROUND DESIGNS, HOLOGRAM AND OTHER SECURITY FEATURES NOT LISTED AND DO EXCEED DOCUMENT SECURITY INDUSTRY GUIDELINES.

For terms & conditions and to verify this report, please visit www.igi.org