



**ELECTRONIC COPY**

694510890  
Report verification at [igi.org](http://igi.org)



April 7, 2025  
IGI Report Number **694510890**  
Description **NATURAL DIAMOND**  
Shape and Cutting Style **EMERALD CUT**  
Measurements **8.27 X 5.51 X 3.78 MM**  
**GRADING RESULTS**  
Carat Weight **1.70 CARAT**  
Color Grade **J**  
Clarity Grade **INTERNALLY FLAWLESS**  
Cut Grade **VERY GOOD**

**DIAMOND REPORT**

April 7, 2025  
IGI Report Number **694510890**  
Description **NATURAL DIAMOND**  
Shape and Cutting Style **EMERALD CUT**  
Measurements **8.27 X 5.51 X 3.78 MM**

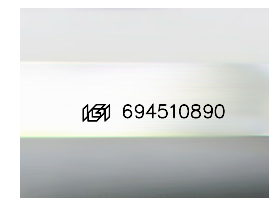
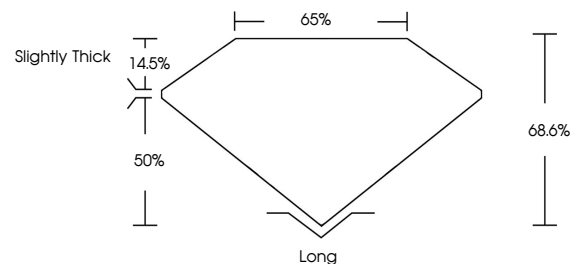
**GRADING RESULTS**

Carat Weight **1.70 CARAT**  
Color Grade **J**  
Clarity Grade **INTERNALLY FLAWLESS**  
Cut Grade **VERY GOOD**

**ADDITIONAL GRADING INFORMATION**

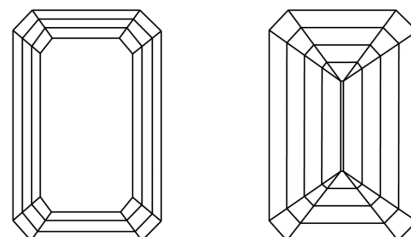
Polish **EXCELLENT**  
Symmetry **EXCELLENT**  
Fluorescence **NONE**  
Inscription(s) **694510890**

**PROPORTIONS**



Sample Image Used

**CLARITY CHARACTERISTICS**



**KEY TO SYMBOLS**

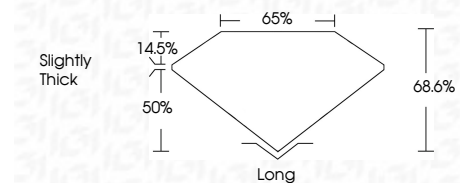
Red symbols indicate internal characteristics.  
Green symbols indicate external characteristics.

**COLOR**

| D - F     | G - J          | K - M           | N - R            | S - Z       | FANCY |
|-----------|----------------|-----------------|------------------|-------------|-------|
| Colorless | Near Colorless | Slightly Tinted | Very Light Color | Light Color |       |

**CLARITY**

| IF                  | VVS <sup>1-2</sup>          | VS <sup>1-2</sup>      | SI <sup>1-2</sup> | I <sup>1-3</sup> |
|---------------------|-----------------------------|------------------------|-------------------|------------------|
| Internally Flawless | Very Very Slightly Included | Very Slightly Included | Slightly Included | Included         |



**ADDITIONAL GRADING INFORMATION**

Polish **EXCELLENT**  
Symmetry **EXCELLENT**  
Fluorescence **NONE**  
Inscription(s) **694510890**



**IGI**



April 7, 2025  
IGI Report No **694510890**  
**EMERALD CUT**  
8.27 X 5.51 X 3.78 MM  
Carat Weight **1.70 CARAT**  
Color Grade **J**  
Clarity Grade **IF**  
Cut Grade **VERY GOOD**  
Depth **68.6%**  
Table **65%**  
Girdle **Slightly Thick**  
Culet **Long**  
Polish **EXCELLENT**  
Symmetry **EXCELLENT**  
Fluorescence **NONE**  
Inscription(s) **694510890**