



# INTERNATIONAL GEMOLOGICAL INSTITUTE

## DIAMOND REPORT

May 2, 2025  
IGI Report Number **692554639**  
Description **NATURAL DIAMOND**  
Shape and Cutting Style **ROUND BRILLIANT**  
Measurements **4.70 - 4.76 X 2.94 MM**

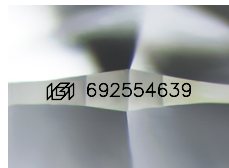
### GRADING RESULTS

Carat Weight **0.40 CARAT**  
Color Grade **I**  
Clarity Grade **INTERNALLY FLAWLESS**  
Cut Grade **EXCELLENT**

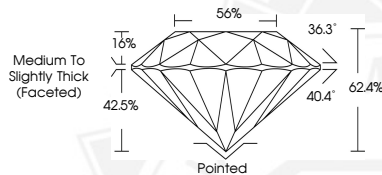
### ADDITIONAL GRADING INFORMATION

Polish **EXCELLENT**  
Symmetry **EXCELLENT**  
Fluorescence **NONE**  
Inscription(s) **IGI 692554639**

ELECTRONIC COPY



Sample Image Used



Medium To  
Slightly Thick  
(Faceted)

Pointed



May 2, 2025

IGI Report Number **692554639**

ROUND BRILLIANT

NATURAL DIAMOND

4.70 - 4.76 X 2.94 MM

Carat Weight **0.40 CARAT**

Color Grade **I**

Clarity Grade **I.F.**

Cut Grade **EXCELLENT**

Polish **EXCELLENT**

Symmetry **EXCELLENT**

Fluorescence **NONE**

Inscription(s) **IGI 692554639**



May 2, 2025

IGI Report Number **692554639**

ROUND BRILLIANT

NATURAL DIAMOND

4.70 - 4.76 X 2.94 MM

Carat Weight **0.40 CARAT**

Color Grade **I**

Clarity Grade **I.F.**

Cut Grade **EXCELLENT**

Polish **EXCELLENT**

Symmetry **EXCELLENT**

Fluorescence **NONE**

Inscription(s) **IGI 692554639**



THIS DOCUMENT WAS PRODUCED WITH THE FOLLOWING SECURITY MEASURES: SPECIAL DOCUMENT PAPER, INK SCREENS, WATERMARK, BACKGROUND DESIGNS, HOLOGRAM AND OTHER SECURITY FEATURES NOT LISTED AND DO EXCEED DOCUMENT SECURITY INDUSTRY GUIDELINES.

For terms & conditions and to verify this report, please visit [www.igi.org](http://www.igi.org)