



**ELECTRONIC COPY**

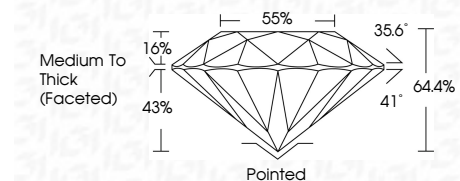
692537792  
Report verification at [igi.org](http://igi.org)



June 25, 2026  
IGI Report Number **692537792**  
Description **NATURAL DIAMOND**  
Shape and Cutting Style **ROUND BRILLIANT**  
Measurements **6.39 - 6.47 X 4.15 MM**

**GRADING RESULTS**

Carat Weight **1.09 CARAT**  
Color Grade **G**  
Clarity Grade **SI 2**  
Cut Grade **VERY GOOD**



**ADDITIONAL GRADING INFORMATION**

Polish **VERY GOOD**  
Symmetry **VERY GOOD**  
Fluorescence **VERY SLIGHT**  
Inscription(s) **IGI 692537792**



**IGI**

June 25, 2026  
IGI Report No. 692537792  
**ROUND BRILLIANT**  
6.39 - 6.47 X 4.15 MM  
1.09 CARAT  
G  
SI 2  
VERY GOOD  
64.4%  
85%  
Medium To Thick (Faceted)  
Pointed  
VERY GOOD  
VERY GOOD  
VERY SLIGHT  
IGI 692537792

**DIAMOND REPORT**

June 25, 2026  
IGI Report Number **692537792**  
Description **NATURAL DIAMOND**  
Shape and Cutting Style **ROUND BRILLIANT**  
Measurements **6.39 - 6.47 X 4.15 MM**

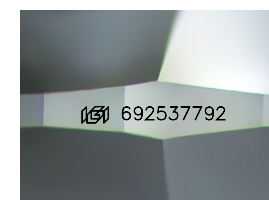
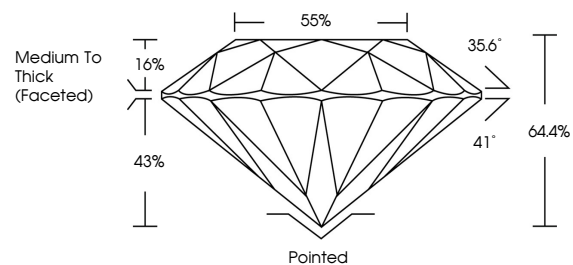
**GRADING RESULTS**

Carat Weight **1.09 CARAT**  
Color Grade **G**  
Clarity Grade **SI 2**  
Cut Grade **VERY GOOD**

**ADDITIONAL GRADING INFORMATION**

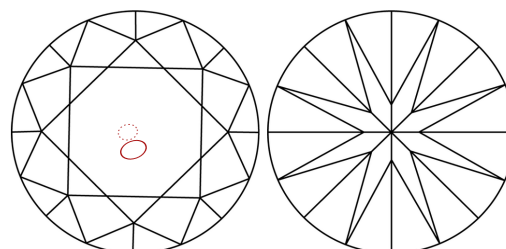
Polish **VERY GOOD**  
Symmetry **VERY GOOD**  
Fluorescence **VERY SLIGHT**  
Inscription(s) **IGI 692537792**

**PROPORTIONS**



Sample Image Used

**CLARITY CHARACTERISTICS**



**KEY TO SYMBOLS**

Red symbols indicate internal characteristics.  
Green symbols indicate external characteristics.

**COLOR**

D - F	G - J	K - M	N - R	S - Z	FANCY
Colorless	Near Colorless	Slightly Tinted	Very Light Color	Light Color	

**CLARITY**

FL	IF	VVS <sup>1-2</sup>	VS <sup>1-2</sup>	SI <sup>1-2</sup>	I <sup>1-3</sup>
Flawless	Internally Flawless	Very Very Slightly Included	Very Slightly Included	Slightly Included	Included

