



ELECTRONIC COPY

692535449
Report verification at igi.org



November 12, 2025
IGI Report Number **692535449**
Description **NATURAL DIAMOND**
Shape and Cutting Style **EMERALD CUT**
Measurements **6.40 X 4.55 X 3.24 MM**
GRADING RESULTS
Carat Weight **1.03 CARAT**
Color Grade **I**
Clarity Grade **SI 2**
Cut Grade **VERY GOOD**

DIAMOND REPORT

November 12, 2025
IGI Report Number **692535449**
Description **NATURAL DIAMOND**
Shape and Cutting Style **EMERALD CUT**
Measurements **6.40 X 4.55 X 3.24 MM**

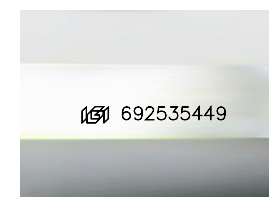
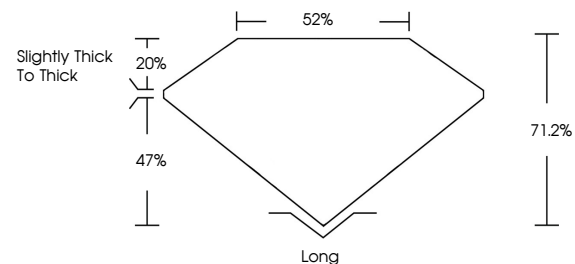
GRADING RESULTS

Carat Weight **1.03 CARAT**
Color Grade **I**
Clarity Grade **SI 2**
Cut Grade **VERY GOOD**

ADDITIONAL GRADING INFORMATION

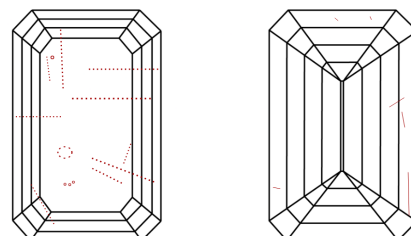
Polish **VERY GOOD**
Symmetry **VERY GOOD**
Fluorescence **NONE**
Inscription(s) **692535449**

PROPORTIONS



Sample Image Used

CLARITY CHARACTERISTICS



KEY TO SYMBOLS

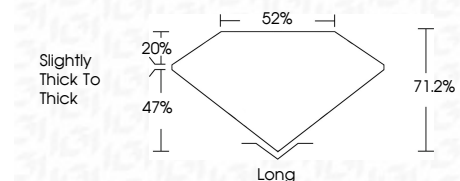
Red symbols indicate internal characteristics.
Green symbols indicate external characteristics.

COLOR

D - F	G - J	K - M	N - R	S - Z	FANCY
Colorless	Near Colorless	Slightly Tinted	Very Light Color	Light Color	

CLARITY

IF	VVS ¹⁻²	VS ¹⁻²	SI ¹⁻²	I ¹⁻³
Internally Flawless	Very Very Slightly Included	Very Slightly Included	Slightly Included	Included



ADDITIONAL GRADING INFORMATION

Polish **VERY GOOD**
Symmetry **VERY GOOD**
Fluorescence **NONE**
Inscription(s) **692535449**



IGI



November 12, 2025
IGI Report No. **692535449**
EMERALD CUT
Carat Weight **1.03 CARAT**
Color Grade **I**
Clarity Grade **SI 2**
Cut Grade **VERY GOOD**
Depth **71.2%**
Table **52%**
Girdle **Slightly thick to thick**
Culet **Long**
Polish **VERY GOOD**
Symmetry **VERY GOOD**
Fluorescence **NONE**
Inscription(s) **692535449**