



**ELECTRONIC COPY**

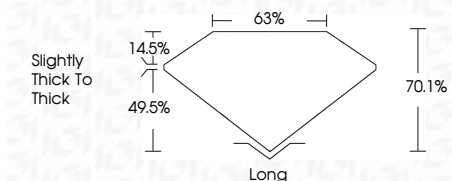
692535445  
Report verification at [igi.org](http://igi.org)



November 12, 2025  
IGI Report Number **692535445**  
Description **NATURAL DIAMOND**  
Shape and Cutting Style **EMERALD CUT**  
Measurements **6.25 X 4.68 X 3.28 MM**

**GRADING RESULTS**

Carat Weight **1.02 CARAT**  
Color Grade **I**  
Clarity Grade **SI 2**  
Cut Grade **VERY GOOD**



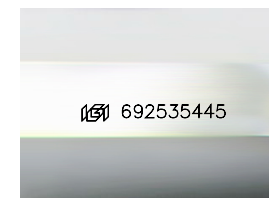
**ADDITIONAL GRADING INFORMATION**

Polish **EXCELLENT**  
Symmetry **VERY GOOD**  
Fluorescence **NONE**  
Inscription(s) **(IGI) 692535445**



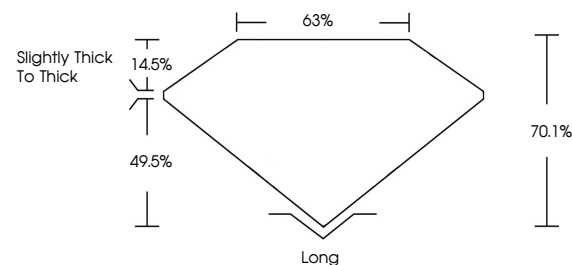
**IGI**

November 12, 2025  
IGI Report No. 692535445  
**EMERALD CUT**  
6.25 X 4.68 X 3.28 MM  
Carat Weight **1.02 CARAT**  
Color Grade **I**  
Clarity Grade **SI 2**  
Cut Grade **VERY GOOD**  
Depth **70.1%**  
Table **63%**  
Girdle **Slightly Thick to Thick**  
Culet **Long**  
Polish **EXCELLENT**  
Symmetry **VERY GOOD**  
Fluorescence **NONE**  
Inscription(s) **(IGI) 692535445**

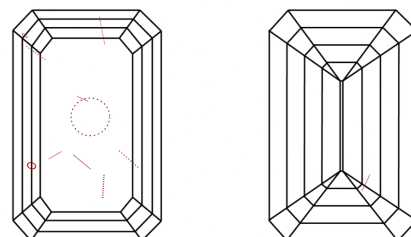


Sample Image Used

**PROPORTIONS**



**CLARITY CHARACTERISTICS**



**KEY TO SYMBOLS**

Red symbols indicate internal characteristics.  
Green symbols indicate external characteristics.

**COLOR**

D - F	G - J	K - M	N - R	S - Z	FANCY
Colorless	Near Colorless	Slightly Tinted	Very Light Color	Light Color	

**CLARITY**

IF	VVS <sup>1-2</sup>	VS <sup>1-2</sup>	SI <sup>1-2</sup>	I <sup>1-3</sup>
Internally Flawless	Very Very Slightly Included	Very Slightly Included	Slightly Included	Included

