



**ELECTRONIC COPY**

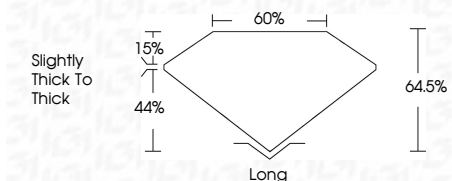
692535444  
Report verification at [igi.org](http://igi.org)



November 12, 2025  
IGI Report Number **692535444**  
Description **NATURAL DIAMOND**  
Shape and Cutting Style **EMERALD CUT**  
Measurements **6.66 X 4.79 X 3.09 MM**

**GRADING RESULTS**

Carat Weight **1.02 CARAT**  
Color Grade **I**  
Clarity Grade **SI 2**  
Cut Grade **VERY GOOD**



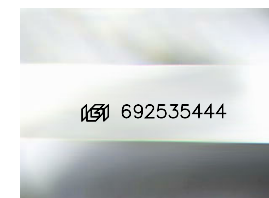
**ADDITIONAL GRADING INFORMATION**

Polish **EXCELLENT**  
Symmetry **VERY GOOD**  
Fluorescence **NONE**  
Inscription(s) **(IGI) 692535444**



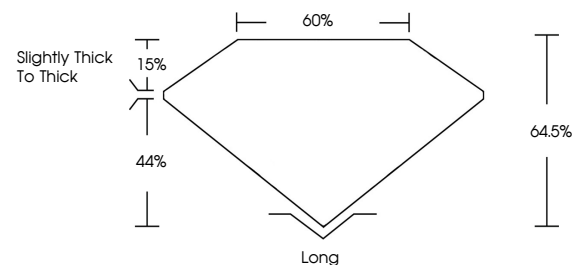
**IGI**

November 12, 2025  
IGI Report No. 692535444  
**EMERALD CUT**  
6.66 X 4.79 X 3.09 MM  
Carat Weight **1.02 CARAT**  
Color Grade **I**  
Clarity Grade **SI 2**  
Depth **VERY GOOD**  
Table **64.5%**  
Girdle **66%**  
Slightly Thick to Thick  
Culet **Long**  
Polish **EXCELLENT**  
Symmetry **VERY GOOD**  
Fluorescence **NONE**  
Inscription(s) **(IGI) 692535444**

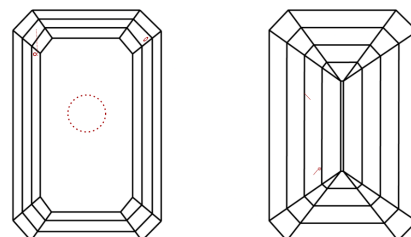


Sample Image Used

**PROPORTIONS**



**CLARITY CHARACTERISTICS**



**KEY TO SYMBOLS**

Red symbols indicate internal characteristics.  
Green symbols indicate external characteristics.

**COLOR**

| D - F     | G - J          | K - M           | N - R            | S - Z       | FANCY |
|-----------|----------------|-----------------|------------------|-------------|-------|
| Colorless | Near Colorless | Slightly Tinted | Very Light Color | Light Color |       |

**CLARITY**

| IF                  | VVS <sup>1-2</sup>          | VS <sup>1-2</sup>      | SI <sup>1-2</sup> | I <sup>1-3</sup> |
|---------------------|-----------------------------|------------------------|-------------------|------------------|
| Internally Flawless | Very Very Slightly Included | Very Slightly Included | Slightly Included | Included         |

