



# INTERNATIONAL GEMOLOGICAL INSTITUTE

## DIAMOND REPORT

May 2, 2025  
IGI Report Number **692524675**  
Description **NATURAL DIAMOND**  
Shape and Cutting Style **ROUND BRILLIANT**  
Measurements **5.87 - 5.90 X 3.70 MM**

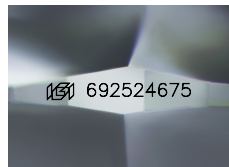
### GRADING RESULTS

Carat Weight **0.81 CARAT**  
Color Grade **K**  
Clarity Grade **SI 2**  
Cut Grade **EXCELLENT**

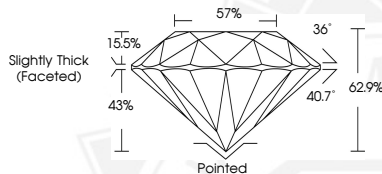
### ADDITIONAL GRADING INFORMATION

Polish **EXCELLENT**  
Symmetry **EXCELLENT**  
Fluorescence **NONE**  
Identification Features **FEATHER, CRYSTAL, CLOUD, NEEDLE**  
Inscription(s) **IGI 692524675**

ELECTRONIC COPY



Sample Image Used



May 2, 2025

IGI Report Number **692524675**

ROUND BRILLIANT

NATURAL DIAMOND

5.87 - 5.90 X 3.70 MM

Carat Weight **0.81 CARAT**

Color Grade **K**

Clarity Grade **SI 2**

Cut Grade **EXCELLENT**

Polish **EXCELLENT**

Symmetry **EXCELLENT**

Fluorescence **NONE**

Inscription(s) **IGI 692524675**



May 2, 2025

IGI Report Number **692524675**

ROUND BRILLIANT

NATURAL DIAMOND

5.87 - 5.90 X 3.70 MM

Carat Weight **0.81 CARAT**

Color Grade **K**

Clarity Grade **SI 2**

Cut Grade **EXCELLENT**

Polish **EXCELLENT**

Symmetry **EXCELLENT**

Fluorescence **NONE**

Inscription(s) **IGI 692524675**



THIS DOCUMENT WAS PRODUCED WITH THE FOLLOWING SECURITY MEASURES: SPECIAL DOCUMENT PAPER, INK SCREENS, WATERMARK, BACKGROUND DESIGN, HOLOGRAM AND OTHER SECURITY FEATURES NOT LISTED AND DO EXCEED DOCUMENT SECURITY INDUSTRY GUIDELINES.

For terms & conditions and to verify this report, please visit [www.igi.org](http://www.igi.org)