



**ELECTRONIC COPY**

## DIAMOND REPORT

March 24, 2025	
IGI Report Number	691562021
Description	NATURAL DIAMOND
Shape and Cutting Style	ROUND BRILLIANT
Measurements	10.25 - 10.31 X 6.23 MM

## GRADING RESULTS

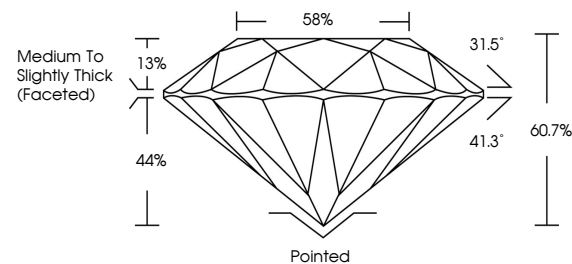
Carat Weight	4.01 CARATS
Color Grade	L
Clarity Grade	SI 2
Cut Grade	EXCELLENT

### ADDITIONAL GRADING INFORMATION

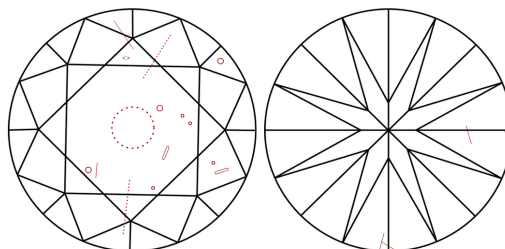
Polish	EXCELLENT
Symmetry	EXCELLENT
Fluorescence	NONE
Inscription(s)	131 691562021

691562021  
Report verification at [igi.org](https://igi.org)

## PROPORTIONS

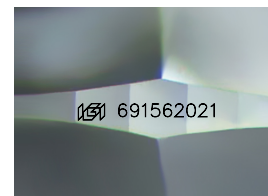


## CLARITY CHARACTERISTICS



## KEY TO SYMBOLS

Red symbols indicate internal characteristics.  
Green symbols indicate external characteristics.



Sample Image Used

**COLOR**

D - F	G - J	K - M	N - R	S - Z	FANCY
Colorless	Near Colorless	Slightly Tinted	Very Light Color	Light Color	

## CLARITY

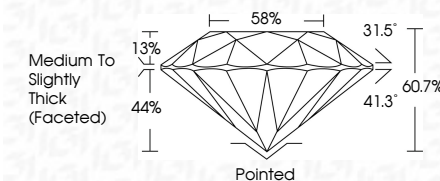
IF	VVS <sup>1-2</sup>	VS <sup>1-2</sup>	SI <sup>1-2</sup>	I <sup>1-3</sup>
Internally Flawless	Very Very Slightly Included	Very Slightly Included	Slightly Included	Included



March 24, 2025	
IGI Report Number	691562021
Description	NATURAL DIAMOND
Shape and Cutting Style	ROUND BRILLIANT
Measurements	10.25 - 10.31 X 6.23 MM

## GRADING RESULTS

Carat Weight	4.01 CARATS
Color Grade	I
Clarity Grade	SI 2
Cut Grade	EXCELLENT



### ADDITIONAL GRADING INFORMATION

Polish	EXCELLENT
Symmetry	EXCELLENT
Fluorescence	NONE
Inscription(s)	(15) 691562021



© IGI 2020, International Gemological Institute

FD - 10 20

**www.igi.org**



THIS DOCUMENT WAS PRODUCED WITH THE FOLLOWING SECURITY MEASURES: SPECIAL DOCUMENT PAPER, INK SCREENS, WATERMARK, BACKGROUND DESIGNS, HOLOGRAM AND OTHER SECURITY FEATURES NOT LISTED AND DO EXCEED DOCUMENT SECURITY INDUSTRY GUIDELINE

March 24, 2025	
GI Report No. 491502021	
ROUND BRILLIANT	
10.025 - 10.31 X 6.23 MM	
Carat Weight	4.01 CARATS
Color Grade	L
Clarity Grade	S12
Depth	EXCELLENT
Table	60.7%
Girdle	56%
Medium to Slightly Thick (Faceted)	
Culet	Pointed
Polish	EXCELLENT
Symmetry	EXCELLENT
Fluorescence	NONE