



# INTERNATIONAL GEMOLOGICAL INSTITUTE

## DIAMOND REPORT

October 7, 2025

IGI Report Number

689512670

Description

NATURAL DIAMOND

Shape and Cutting Style

ROUND BRILLIANT

Measurements

4.76 - 4.78 X 2.85 MM

### GRADING RESULTS

Carat Weight

0.40 CARAT

Color Grade

H

Clarity Grade

SI 1

Cut Grade

EXCELLENT

### ADDITIONAL GRADING INFORMATION

Polish

EXCELLENT

Symmetry

EXCELLENT

Fluorescence

NONE

Identification Features

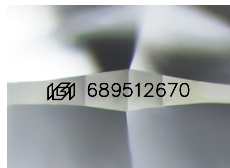
FEATHER, CRYSTAL CLOUD

Inscription(s)

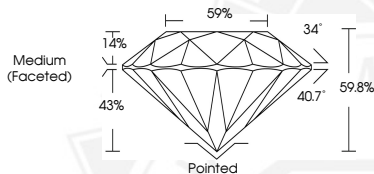
IGI 689512670

Comments: IDEAL CUT ROUND BRILLIANT

ELECTRONIC COPY



Sample Image Used



October 7, 2025

IGI Report Number 689512670

ROUND BRILLIANT

NATURAL DIAMOND

4.76 - 4.78 X 2.85 MM

Carat Weight 0.40 CARAT

Color Grade H

Clarity Grade SI 1

Cut Grade EXCELLENT

Polish EXCELLENT

Symmetry EXCELLENT

Fluorescence NONE

Inscription(s) IGI 689512670

Comments: IDEAL CUT ROUND

BRILLIANT



October 7, 2025

IGI Report Number 689512670

ROUND BRILLIANT

NATURAL DIAMOND

4.76 - 4.78 X 2.85 MM

Carat Weight 0.40 CARAT

Color Grade H

Clarity Grade SI 1

Cut Grade EXCELLENT

Polish EXCELLENT

Symmetry EXCELLENT

Fluorescence NONE

Inscription(s) IGI 689512670

Comments: IDEAL CUT ROUND

BRILLIANT



THIS DOCUMENT WAS PRODUCED WITH THE FOLLOWING SECURITY MEASURES: SPECIAL DOCUMENT PAPER, INK SCREENS, WATERMARK, BACKGROUND DESIGNS, HOLOGRAM AND OTHER SECURITY FEATURES NOT LISTED AND DO EXCEED DOCUMENT SECURITY INDUSTRY GUIDELINES.

For terms & conditions and to verify this report, please visit [www.igi.org](http://www.igi.org)