



# INTERNATIONAL GEMOLOGICAL INSTITUTE

## DIAMOND REPORT

September 23, 2025

IGI Report Number

689512394

Description

NATURAL DIAMOND

Shape and Cutting Style

ROUND BRILLIANT

Measurements

4.68 - 4.72 X 2.94 MM

### GRADING RESULTS

Carat Weight

0.40 CARAT

Color Grade

I

Clarity Grade

SI 2

Cut Grade

EXCELLENT

### ADDITIONAL GRADING INFORMATION

Polish

EXCELLENT

Symmetry

EXCELLENT

Fluorescence

VERY SLIGHT

Identification Features

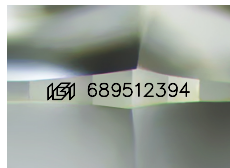
FEATHER, CRYSTAL CLOUD

Inscription(s)

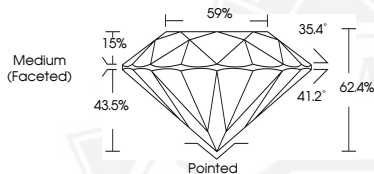
IGI 689512394

Comments: IDEAL CUT ROUND BRILLIANT

ELECTRONIC COPY



Sample Image Used



September 23, 2025

IGI Report Number 689512394

ROUND BRILLIANT

NATURAL DIAMOND

4.68 - 4.72 X 2.94 MM

Carat Weight 0.40 CARAT

Color Grade I

Clarity Grade SI 2

Cut Grade EXCELLENT

Polish EXCELLENT

Symmetry EXCELLENT

Fluorescence VERY SLIGHT

Inscription(s) IGI 689512394

Comments: IDEAL CUT ROUND BRILLIANT



September 23, 2025

IGI Report Number 689512394

ROUND BRILLIANT

NATURAL DIAMOND

4.68 - 4.72 X 2.94 MM

Carat Weight 0.40 CARAT

Color Grade I

Clarity Grade SI 2

Cut Grade EXCELLENT

Polish EXCELLENT

Symmetry EXCELLENT

Fluorescence VERY SLIGHT

Inscription(s) IGI 689512394

Comments: IDEAL CUT ROUND BRILLIANT



THIS DOCUMENT WAS PRODUCED WITH THE FOLLOWING SECURITY MEASURES: SPECIAL DOCUMENT PAPER, INK SCREENS, WATERMARK, BACKGROUND DESIGNS, HOLOGRAM AND OTHER SECURITY FEATURES NOT LISTED AND DO EXCEED DOCUMENT SECURITY INDUSTRY GUIDELINES.

For terms & conditions and to verify this report, please visit [www.igi.org](http://www.igi.org)