



September 23, 2025

IGI Report Number 689512393

**ROUND BRILLIANT
NATURAL DIAMOND**
4.44 - 4.47 X 2.71 MM

Carat Weight **0.32 CARAT**
Color Grade **H**
Clarity Grade **VS 2**
Cut Grade **EXCELLENT**
Polish **EXCELLENT**
Symmetry **EXCELLENT**
Fluorescence **VERY SLIGHT**
Inscription(s) **IGI 689512393**

DIAMOND REPORT

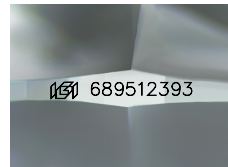
September 23, 2025
IGI Report Number **689512393**
Description **NATURAL DIAMOND**
Shape and Cutting Style **ROUND BRILLIANT**
Measurements **4.44 - 4.47 X 2.71 MM**

GRADING RESULTS

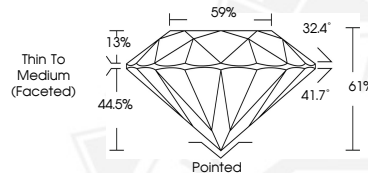
Carat Weight **0.32 CARAT**
Color Grade **H**
Clarity Grade **VS 2**
Cut Grade **EXCELLENT**

ADDITIONAL GRADING INFORMATION

Polish **EXCELLENT**
Symmetry **EXCELLENT**
Fluorescence **VERY SLIGHT**
Identification Features **FEATHER, CRYSTAL CLOUD**
Inscription(s) **IGI 689512393**



Sample Image Used



September 23, 2025

IGI Report Number 689512393

**ROUND BRILLIANT
NATURAL DIAMOND**
4.44 - 4.47 X 2.71 MM

Carat Weight **0.32 CARAT**
Color Grade **H**
Clarity Grade **VS 2**
Cut Grade **EXCELLENT**
Polish **EXCELLENT**
Symmetry **EXCELLENT**
Fluorescence **VERY SLIGHT**
Inscription(s) **IGI 689512393**



THIS DOCUMENT WAS PRODUCED WITH THE FOLLOWING SECURITY MEASURES: SPECIAL DOCUMENT PAPER, INK SCREENS, WATERMARK, BACKGROUND DESIGNS, HOLOGRAM AND OTHER SECURITY FEATURES NOT LISTED AND DO EXCEED DOCUMENT SECURITY INDUSTRY GUIDELINES.