



ELECTRONIC COPY

DIAMOND REPORT

May 15, 2025	
IGI Report Number	687522330
Description	NATURAL DIAMOND
Shape and Cutting Style	ROUND BRILLIANT
Measurements	8.69 - 8.73 X 5.40 MM

GRADING RESULTS

Carat Weight	2.53 CARATS
Color Grade	H
Clarity Grade	SI 1
Cut Grade	EXCELLENT

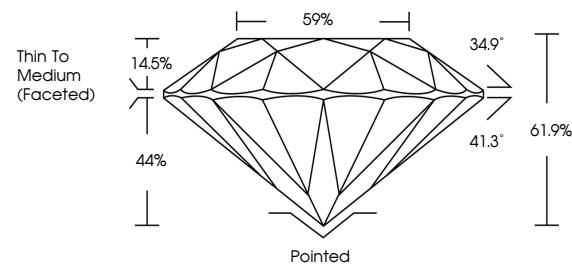
ADDITIONAL GRADING INFORMATION

Polish	EXCELLENT
Symmetry	EXCELLENT
Fluorescence	STRONG
Inscription(s)	131 687522330

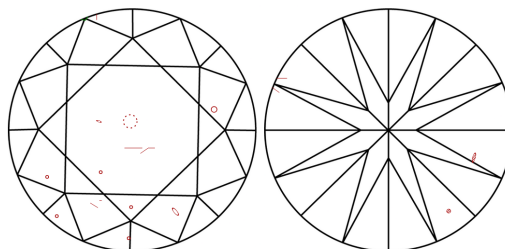
Comments: IDEAL CUT ROUND BRILLIANT
Faint Yellowish Green

687522330
Report verification at igi.org

PROPORTIONS

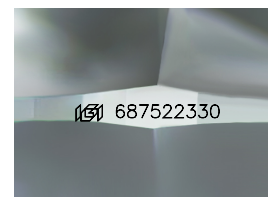


CLARITY CHARACTERISTICS



KEY TO SYMBOLS

Red symbols indicate internal characteristics.
Green symbols indicate external characteristics.



Sample Image Used

COLOR

D - F	G - J	K - M	N - R	S - Z	FANCY
Colorless	Near Colorless	Slightly Tinted	Very Light Color	Light Color	

CLARITY

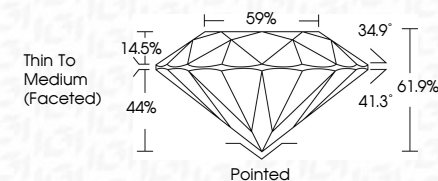
IF	VVS ¹⁻²	VS ¹⁻²	SI ¹⁻²	I ¹⁻³
Internally Flawless	Very Very Slightly Included	Very Slightly Included	Slightly Included	Included



May 15, 2025	
IGI Report Number	687522330
Description	NATURAL DIAMOND
Shape and Cutting Style	ROUND BRILLIANT
Measurements	8.69 - 8.73 X 5.40 MM

GRADING RESULTS

Carat Weight	2.53 CARATS
Color Grade	H
Clarity Grade	SI 1
Cut Grade	EXCELLENT



ADDITIONAL GRADING INFORMATION

Polish	EXCELLENT
Symmetry	EXCELLENT
Fluorescence	STRONG
Inscription(s)	1631 687522330
Comments: IDEAL CUT ROUND BRILLIANT Faint Yellowish Green	



IG



© IGI 2020, International Gemological Institute

FD - 10 20

www.igi.org

THIS DOCUMENT WAS PRODUCED WITH THE FOLLOWING SECURITY MEASURES: SPECIAL DOCUMENT PAPER, INK SCREENS, WATERMARK, BACKGROUND DESIGNS, HOLOGRAM AND OTHER SECURITY FEATURES NOT LISTED AND DO EXCEED DOCUMENT SECURITY INDUSTRY GUIDELINE

May 15, 2005
 GE Report No. 687522330
 ROUND BRILLIANT
 6.99 - 8.73 X 5.40 MM
 Carat Weight
 Color Grade
 Clarity Grade
 Cut Grade
 Depth
 Table
 Girdle
 Culet
 Polish
 Symmetry
 Fluorescence
 Inscription(s)
 Comments:
 DEAL CUT ROUND BRILLIANT
 CARAT VELLOW EYE