



**ELECTRONIC COPY**

## DIAMOND REPORT

July 17, 2025	
IGI Report Number	683576731
Description	NATURAL DIAMOND
Shape and Cutting Style	ROUND BRILLIANT
Measurements	10.85 - 10.91 X 6.84 MM

## GRADING RESULTS

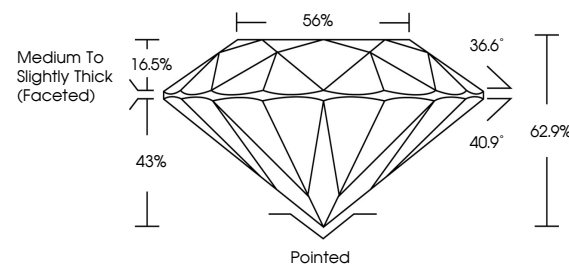
Carat Weight	5.01 CARATS
Color Grade	K
Clarity Grade	SI 1
Cut Grade	EXCELLENT

### ADDITIONAL GRADING INFORMATION

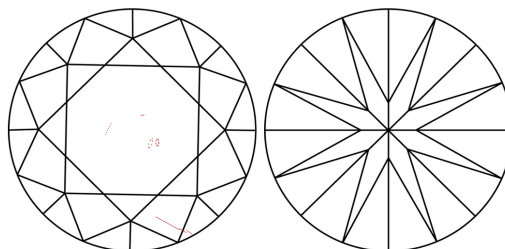
Polish	EXCELLENT
Symmetry	EXCELLENT
Fluorescence	NONE
Inscription(s)	151 683576731

683576731  
Report verification at [igi.org](https://igi.org)

## PROPORTIONS

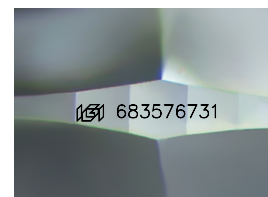


## CLARITY CHARACTERISTICS



### KEY TO SYMBOLS

Red symbols indicate internal characteristics.  
Green symbols indicate external characteristics.



Sample Image Used

**COLOR**

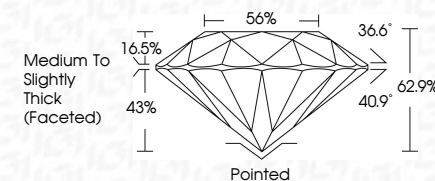
D - F	G - J	K - M	N - R	S - Z	FANCY
Colorless	Near Colorless	Slightly Tinted	Very Light Color	Light Color	

## CLARITY

IF	VVS <sup>1-2</sup>	VS <sup>1-2</sup>	SI <sup>1-2</sup>	I <sup>1-3</sup>
Internally Flawless	Very Very Slightly Included	Very Slightly Included	Slightly Included	Included



July 17, 2025	
IGI Report Number	683576731
Description	NATURAL DIAMOND
Shape and Cutting Style	ROUND BRILLIANT
Measurements	10.85 - 10.91 X 6.84 MM
GRADING RESULTS	
Carat Weight	5.01 CARATS
Color Grade	K
Clarity Grade	SI 1
Cut Grade	EXCELLENT



### ADDITIONAL GRADING INFORMATION

Polish	EXCELLENT
Symmetry	EXCELLENT
Fluorescence	NONE
Inscription(s)	1683576731



IG



© IGI 2020, International Gemological Institute

FD - 10 20



THIS DOCUMENT WAS PRODUCED WITH THE FOLLOWING SECURITY MEASURES: SPECIAL DOCUMENT PAPER, INK SCREENS, WATERMARK, BACKGROUND DESIGNS, HOLOGRAM AND OTHER SECURITY FEATURES NOT LISTED AND DO EXCEED DOCUMENT SECURITY INDUSTRY GUIDELINES

**www.igi.org**

July 17, 2025	Carat Weight	Cut Grade	Culet
GI Report No 689576731	Color Grade	Depth	Polish
ROUND BRILLIANT		Table	Symmetry
		Grade	Fluorescence
10.95 - 10.91 X 6.84 MM			Measurements (mm)
			Med Th