



ELECTRONIC COPY

683576687
Report verification at igi.org



July 17, 2025
IGI Report Number **683576687**
Description **NATURAL DIAMOND**
Shape and Cutting Style **EMERALD CUT**
Measurements **8.04 X 5.45 X 3.76 MM**
GRADING RESULTS
Carat Weight **1.70 CARAT**
Color Grade **J**
Clarity Grade **INTERNALLY FLAWLESS**
Cut Grade **VERY GOOD**

DIAMOND REPORT

July 17, 2025
IGI Report Number **683576687**
Description **NATURAL DIAMOND**
Shape and Cutting Style **EMERALD CUT**
Measurements **8.04 X 5.45 X 3.76 MM**

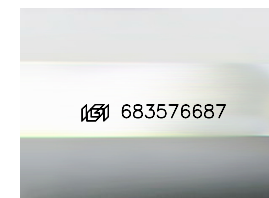
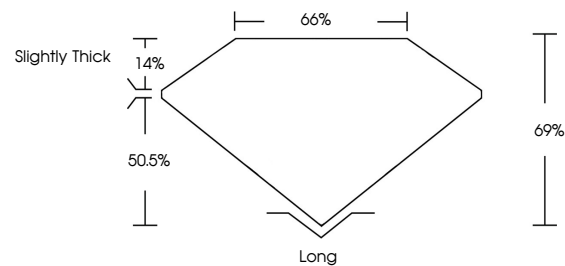
GRADING RESULTS

Carat Weight **1.70 CARAT**
Color Grade **J**
Clarity Grade **INTERNALLY FLAWLESS**
Cut Grade **VERY GOOD**

ADDITIONAL GRADING INFORMATION

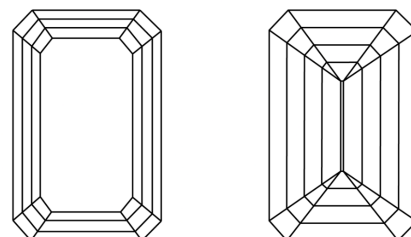
Polish **EXCELLENT**
Symmetry **EXCELLENT**
Fluorescence **NONE**
Inscription(s) **683576687**

PROPORTIONS



Sample Image Used

CLARITY CHARACTERISTICS



KEY TO SYMBOLS

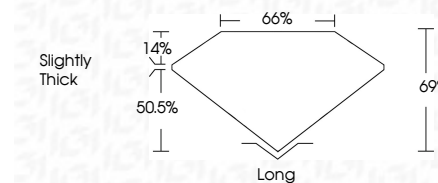
Red symbols indicate internal characteristics.
Green symbols indicate external characteristics.

COLOR

D - F	G - J	K - M	N - R	S - Z	FANCY
Colorless	Near Colorless	Slightly Tinted	Very Light Color	Light Color	

CLARITY

IF	VVS ¹⁻²	VS ¹⁻²	SI ¹⁻²	I ¹⁻³
Internally Flawless	Very Very Slightly Included	Very Slightly Included	Slightly Included	Included



ADDITIONAL GRADING INFORMATION

Polish **EXCELLENT**
Symmetry **EXCELLENT**
Fluorescence **NONE**
Inscription(s) **683576687**



IGI



July 17, 2025
IGI Report No. 683576687
EMERALD CUT
8.04 X 5.45 X 3.76 MM
Carat Weight **1.70 CARAT**
Color Grade **J**
Clarity Grade **IF**
Depth **69%**
Table **66%**
Girdle **Slightly Thick**
Culet **Long**
Polish **EXCELLENT**
Symmetry **EXCELLENT**
Fluorescence **NONE**
Inscription(s) **683576687**