



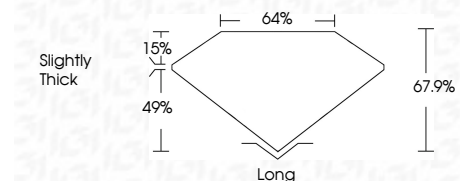
**ELECTRONIC COPY**

681594503  
Report verification at [igi.org](http://igi.org)



February 25, 2025  
IGI Report Number **681594503**  
Description **NATURAL DIAMOND**  
Shape and Cutting Style **EMERALD CUT**  
Measurements **10.14 X 7.03 X 4.77 MM**

**GRADING RESULTS**  
Carat Weight **3.53 CARATS**  
Color Grade **I**  
Clarity Grade **VS 2**  
Cut Grade **EXCELLENT**



**ADDITIONAL GRADING INFORMATION**  
Polish **EXCELLENT**  
Symmetry **EXCELLENT**  
Fluorescence **STRONG**  
Inscription(s) **IGI 681594503**



February 25, 2025  
IGI Report No 681594503  
**EMERALD CUT**  
10.14 X 7.03 X 4.77 MM  
3.53 CARATS  
I  
VS 2  
EXCELLENT  
67.9%  
49%  
64%  
Slightly Thick  
Long  
EXCELLENT  
EXCELLENT  
STRONG  
IGI 681594503

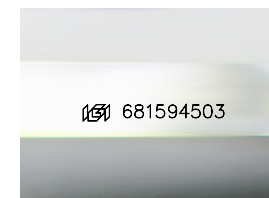
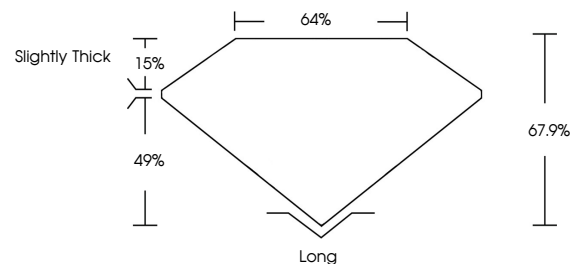
**DIAMOND REPORT**

February 25, 2025  
IGI Report Number **681594503**  
Description **NATURAL DIAMOND**  
Shape and Cutting Style **EMERALD CUT**  
Measurements **10.14 X 7.03 X 4.77 MM**

**GRADING RESULTS**  
Carat Weight **3.53 CARATS**  
Color Grade **I**  
Clarity Grade **VS 2**  
Cut Grade **EXCELLENT**

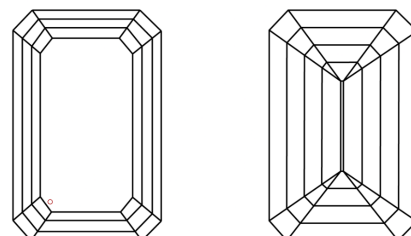
**ADDITIONAL GRADING INFORMATION**  
Polish **EXCELLENT**  
Symmetry **EXCELLENT**  
Fluorescence **STRONG**  
Inscription(s) **IGI 681594503**

**PROPORTIONS**



Sample Image Used

**CLARITY CHARACTERISTICS**



**KEY TO SYMBOLS**

Red symbols indicate internal characteristics.  
Green symbols indicate external characteristics.

**COLOR**

D - F	G - J	K - M	N - R	S - Z	FANCY
Colorless	Near Colorless	Slightly Tinted	Very Light Color	Light Color	

**CLARITY**

IF	VVS <sup>1-2</sup>	VS <sup>1-2</sup>	SI <sup>1-2</sup>	I <sup>1-3</sup>
Internally Flawless	Very Very Slightly Included	Very Slightly Included	Slightly Included	Included

