



ELECTRONIC COPY

DIAMOND REPORT

July 12, 2025	
IGI Report Number	681559391
Description	NATURAL DIAMOND
Shape and Cutting Style	ROUND BRILLIANT
Measurements	8.02 - 8.06 X 5.01 MM

GRADING RESULTS

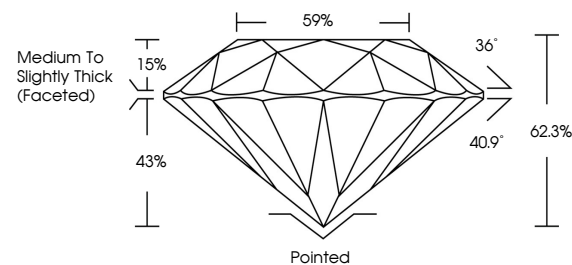
Carat Weight	2.03 CARATS
Color Grade	I
Clarity Grade	VS 1
Cut Grade	EXCELLENT

ADDITIONAL GRADING INFORMATION

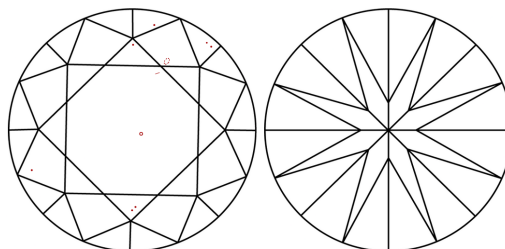
Polish	EXCELLENT
Symmetry	EXCELLENT
Fluorescence	NONE
Inscription(s)	 681559391
Comments: IDEAL CUT ROUND BRILLIANT	

681559391
Report verification at igi.org

PROPORTIONS

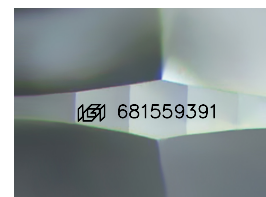


CLARITY CHARACTERISTICS



KEY TO SYMBOLS

Red symbols indicate internal characteristics.
Green symbols indicate external characteristics.



Sample Image Used

COLOR

D - F	G - J	K - M	N - R	S - Z	FANCY
Colorless	Near Colorless	Slightly Tinted	Very Light Color	Light Color	

CLARITY

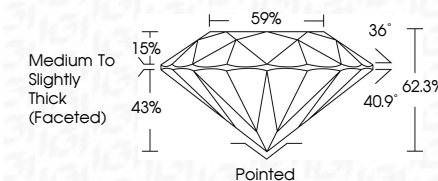
IF	VS ¹⁻²	VS ¹⁻²	SI ¹⁻²	I ¹⁻³
Internally Flawless	Very Very Slightly Included	Very Slightly Included	Slightly Included	Included



July 12, 2025	
IGI Report Number	681559391
Description	NATURAL DIAMOND
Shape and Cutting Style	ROUND BRILLIANT
Measurements	8.02 - 8.06 X 5.01 MM

GRADING RESULTS

Carat Weight	2.03 CARATS
Color Grade	I
Clarity Grade	VS 1
Cut Grade	EXCELLENT



ADDITIONAL GRADING INFORMATION

Polish	EXCELLENT
Symmetry	EXCELLENT
Fluorescence	NONE
Inscription(s)	151 681559391
Comments: IDEAL CUT ROUND BRILLIANT	



© IGI 2020, International Gemological Institute

FD - 10 20



THIS DOCUMENT WAS PRODUCED WITH THE FOLLOWING SECURITY MEASURES: SPECIAL DOCUMENT PAPER, INK SCREENS, WATERMARK, BACKGROUND DESIGNS, HOLOGRAM AND OTHER SECURITY FEATURES NOT LISTED AND DO EXCEED DOCUMENT SECURITY INDUSTRY GUIDELINE

www.igi.org

July 12, 2025	Medi
GI Report No. 691155991	Th
ROUND BRILLIANT	
ROUND - 8.06 X 6.01 MM	
Carat Weight	Culet
Color Grade	Polish
Clarity Grade	Symmetry
Cut Grade	Fluorescence
Depth	Inscriptions
Table	
Girdle	
	Comments:
	IDEAL CUT ROUND BRILLIANT