



**ELECTRONIC COPY**

## DIAMOND REPORT

July 12, 2025	
IGI Report Number	681559383
Description	NATURAL DIAMOND
Shape and Cutting Style	ROUND BRILLIANT
Measurements	8.04 - 8.10 X 5.02 MM

## GRADING RESULTS

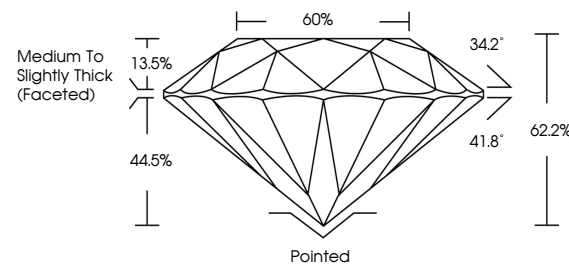
Carat Weight	2.02 CARATS
Color Grade	H
Clarity Grade	VVS 2
Cut Grade	EXCELLENT

### ADDITIONAL GRADING INFORMATION

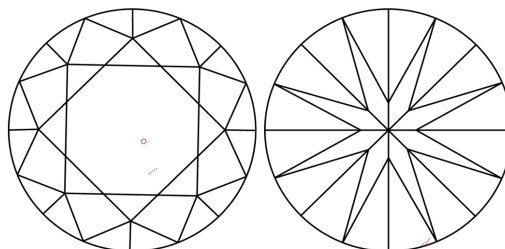
Polish	EXCELLENT
Symmetry	EXCELLENT
Fluorescence	NONE
Inscription(s)	131 681559383

681559383  
Report verification at [igi.org](https://www.igi.org)

## PROPORTIONS

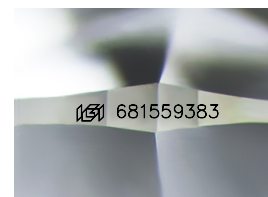


## CLARITY CHARACTERISTICS



## KEY TO SYMBOLS

Red symbols indicate internal characteristics.  
Green symbols indicate external characteristics.



Sample Image Used

**COLOR**

D - F	G - J	K - M	N - R	S - Z	FANCY
Colorless	Near Colorless	Slightly Tinted	Very Light Color	Light Color	

## CLARITY

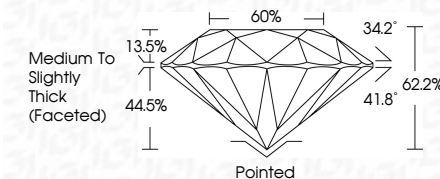
IF	VVS <sup>1-2</sup>	VS <sup>1-2</sup>	SI <sup>1-2</sup>	I <sup>1-3</sup>
Internally Flawless	Very Very Slightly Included	Very Slightly Included	Slightly Included	Included



July 12, 2025	
IGI Report Number	681559383
Description	NATURAL DIAMOND
Shape and Cutting Style	ROUND BRILLIANT
Measurements	8.04 - 8.10 X 5.02 MM

## GRADING RESULTS

Carat Weight	2.02 CARATS
Color Grade	H
Clarity Grade	VVS 2
Cut Grade	EXCELLENT



### ADDITIONAL GRADING INFORMATION

Polish	EXCELLENT
Symmetry	EXCELLENT
Fluorescence	NONE
Inscription(s)	(15) 681559383



© IGI 2020, International Gemological Institute

FD - 10 20

**www.igi.org**



THIS DOCUMENT WAS PRODUCED WITH THE FOLLOWING SECURITY MEASURES: SPECIAL DOCUMENT PAPER, INK SCREENS, WATERMARK, BACKGROUND DESIGNS, HOLOGRAM AND OTHER SECURITY FEATURES NOT LISTED AND DO EXCEED DOCUMENT SECURITY INDUSTRY GUIDELINE

July 12, 2025  
IGI Report No 681559383  
ROUND BRILLIANT

ROUND BRILLIANT	0.04 - 0.1X 5.02 MM	2.02 CARATS	VVS 2	EXCELLENT	62.2%	65%	Medium to Slightly Thick Faceted	Pointed	EXCELLENT	EXCELLENT	NONE	459 431 525983
		Carat Weight	Clarity Grade	Color Grade	Depth	Table	Grades	Culet	Polish	Symmetry	Fluorescence	