



# INTERNATIONAL GEMOLOGICAL INSTITUTE

## DIAMOND REPORT

August 25, 2025

IGI Report Number

681542313

Description

NATURAL DIAMOND

Shape and Cutting Style

ROUND BRILLIANT

Measurements

5.13 - 5.16 X 3.21 MM

### GRADING RESULTS

Carat Weight

0.52 CARAT

Color Grade

E

Clarity Grade

VS 2

Cut Grade

EXCELLENT

### ADDITIONAL GRADING INFORMATION

Polish

EXCELLENT

Symmetry

EXCELLENT

Fluorescence

VERY SLIGHT

Identification Features

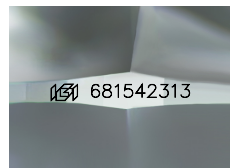
CRYSTAL, FEATHER, CAVITY

Inscription(s)

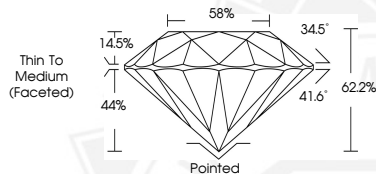
IGI 681542313

Comments: IDEAL CUT ROUND BRILLIANT

ELECTRONIC COPY



Sample Image Used



THIS DOCUMENT WAS PRODUCED WITH THE FOLLOWING SECURITY MEASURES: SPECIAL DOCUMENT PAPER, INK SCREENS, WATERMARK, BACKGROUND DESIGNS, HOLOGRAM AND OTHER SECURITY FEATURES NOT LISTED AND DO EXCEED DOCUMENT SECURITY INDUSTRY GUIDELINES.

For terms & conditions and to verify this report, please visit [www.igi.org](http://www.igi.org)



August 25, 2025

IGI Report Number 681542313

ROUND BRILLIANT

NATURAL DIAMOND

5.13 - 5.16 X 3.21 MM

Carat Weight 0.52 CARAT

Color Grade E

Clarity Grade VS 2

Cut Grade EXCELLENT

Polish EXCELLENT

Symmetry EXCELLENT

Fluorescence VERY SLIGHT

Inscription(s) IGI 681542313

Comments: IDEAL CUT ROUND

BRILLIANT



August 25, 2025

IGI Report Number 681542313

ROUND BRILLIANT

NATURAL DIAMOND

5.13 - 5.16 X 3.21 MM

Carat Weight 0.52 CARAT

Color Grade E

Clarity Grade VS 2

Cut Grade EXCELLENT

Polish EXCELLENT

Symmetry EXCELLENT

Fluorescence VERY SLIGHT

Inscription(s) IGI 681542313

Comments: IDEAL CUT ROUND

BRILLIANT