



**ELECTRONIC COPY**

**DIAMOND REPORT**

February 12, 2025  
IGI Report Number **680560837**  
Description **NATURAL DIAMOND**  
Shape and Cutting Style **SQUARE EMERALD CUT**  
Measurements **11.52 X 11.43 X 8.56 MM**

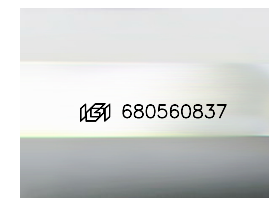
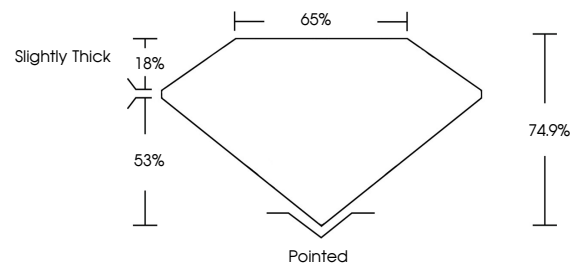
**GRADING RESULTS**

Carat Weight **10.07 CARATS**  
Color Grade **K**  
Clarity Grade **VVS 2**  
Cut Grade **VERY GOOD**

**ADDITIONAL GRADING INFORMATION**

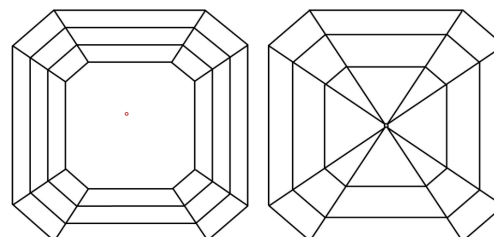
Polish **EXCELLENT**  
Symmetry **EXCELLENT**  
Fluorescence **NONE**  
Inscription(s) **680560837**

**PROPORTIONS**



Sample Image Used

**CLARITY CHARACTERISTICS**



**KEY TO SYMBOLS**

Red symbols indicate internal characteristics.  
Green symbols indicate external characteristics.

**COLOR**

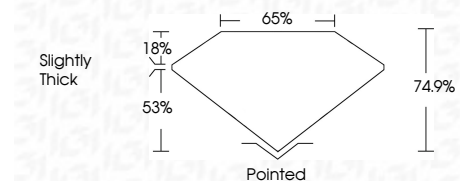
D - F	G - J	K - M	N - R	S - Z	FANCY
Colorless	Near Colorless	Slightly Tinted	Very Light Color	Light Color	

**CLARITY**

IF	VVS <sup>1-2</sup>	VS <sup>1-2</sup>	SI <sup>1-2</sup>	I <sup>1-3</sup>
Internally Flawless	Very Very Slightly Included	Very Slightly Included	Slightly Included	Included



February 12, 2025  
IGI Report Number **680560837**  
Description **NATURAL DIAMOND**  
Shape and Cutting Style **SQUARE EMERALD CUT**  
Measurements **11.52 X 11.43 X 8.56 MM**  
**GRADING RESULTS**  
Carat Weight **10.07 CARATS**  
Color Grade **K**  
Clarity Grade **VVS 2**  
Cut Grade **VERY GOOD**



**ADDITIONAL GRADING INFORMATION**

Polish **EXCELLENT**  
Symmetry **EXCELLENT**  
Fluorescence **NONE**  
Inscription(s) **680560837**



**IGI**



February 12, 2025  
IGI Report No. **680560837**  
**SQUARE EMERALD CUT**  
11.52 X 11.43 X 8.56 MM  
10.07 CARATS  
K  
VVS 2  
VERY GOOD  
74.9%  
65%  
Slightly Thick  
Pointed  
EXCELLENT  
EXCELLENT  
NONE  
 680560837