



# INTERNATIONAL GEMOLOGICAL INSTITUTE

## DIAMOND REPORT

January 29, 2025  
IGI Report Number **678557261**  
Description **NATURAL DIAMOND**  
Shape and Cutting Style **ROUND BRILLIANT**  
Measurements **5.09 - 5.11 X 3.14 MM**

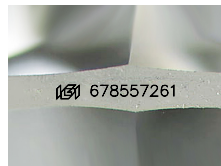
### GRADING RESULTS

Carat Weight **0.51 CARAT**  
Color Grade **K**  
Clarity Grade **I 1**  
Cut Grade **EXCELLENT**

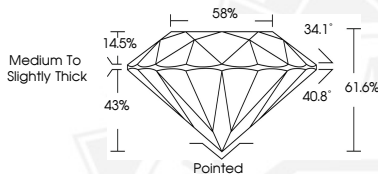
### ADDITIONAL GRADING INFORMATION

Polish **EXCELLENT**  
Symmetry **EXCELLENT**  
Fluorescence **NONE**  
Inscription(s) **IGI 678557261**

ELECTRONIC COPY



Sample Image Used



January 29, 2025  
IGI Report Number **678557261**  
ROUND BRILLIANT  
NATURAL DIAMOND  
5.09 - 5.11 X 3.14 MM  
Carat Weight **0.51 CARAT**  
Color Grade **K**  
Clarity Grade **I 1**  
Cut Grade **EXCELLENT**  
Polish **EXCELLENT**  
Symmetry **EXCELLENT**  
Fluorescence **NONE**  
Inscription(s) **IGI 678557261**



January 29, 2025  
IGI Report Number **678557261**  
ROUND BRILLIANT  
NATURAL DIAMOND  
5.09 - 5.11 X 3.14 MM  
Carat Weight **0.51 CARAT**  
Color Grade **K**  
Clarity Grade **I 1**  
Cut Grade **EXCELLENT**  
Polish **EXCELLENT**  
Symmetry **EXCELLENT**  
Fluorescence **NONE**  
Inscription(s) **IGI 678557261**



THIS DOCUMENT WAS PRODUCED WITH THE FOLLOWING SECURITY MEASURES: SPECIAL DOCUMENT PAPER, INK SCREENS, WATERMARK, BACKGROUND DESIGN, HOLOGRAM AND OTHER SECURITY FEATURES NOT LISTED AND DO EXCEED DOCUMENT SECURITY INDUSTRY GUIDELINES.

For terms & conditions and to verify this report, please visit [www.igi.org](http://www.igi.org)