



# INTERNATIONAL GEMOLOGICAL INSTITUTE

## DIAMOND REPORT

January 27, 2025

IGI Report Number

Description

Shape and Cutting Style

Measurements

675596015

NATURAL DIAMOND

ROUND BRILLIANT

5.25 - 5.27 X 3.25 MM

## GRADING RESULTS

Carat Weight

Color Grade

Clarity Grade

Cut Grade

0.55 CARAT

E

SI 1

EXCELLENT

## ADDITIONAL GRADING INFORMATION

Polish

Symmetry

Fluorescence

Identification Features

Inscription(s)

Comments: IDEAL CUT ROUND BRILLIANT

EXCELLENT

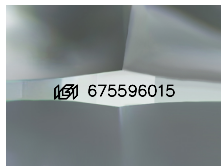
EXCELLENT

NONE

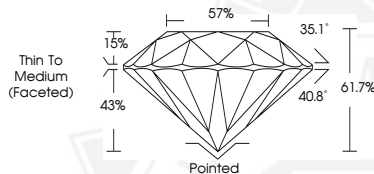
CRYSTAL CLOUD

(IGI) 675596015

ELECTRONIC COPY



Sample Image Used



January 27, 2025

IGI Report Number 675596015

ROUND BRILLIANT

NATURAL DIAMOND

5.25 - 5.27 X 3.25 MM

Carat Weight 0.55 CARAT

Color Grade E

Clarity Grade SI 1

Cut Grade EXCELLENT

Polish EXCELLENT

Symmetry EXCELLENT

Fluorescence NONE

Inscription(s) (IGI) 675596015

Comments: IDEAL CUT ROUND BRILLIANT



January 27, 2025

IGI Report Number 675596015

ROUND BRILLIANT

NATURAL DIAMOND

5.25 - 5.27 X 3.25 MM

Carat Weight 0.55 CARAT

Color Grade E

Clarity Grade SI 1

Cut Grade EXCELLENT

Polish EXCELLENT

Symmetry EXCELLENT

Fluorescence NONE

Inscription(s) (IGI) 675596015

Comments: IDEAL CUT ROUND BRILLIANT



THIS DOCUMENT WAS PRODUCED WITH THE FOLLOWING SECURITY MEASURES: SPECIAL DOCUMENT PAPER, INK SCREENS, WATERMARK, BACKGROUND DESIGNS, HOLOGRAM AND OTHER SECURITY FEATURES NOT LISTED AND DO EXCEED DOCUMENT SECURITY INDUSTRY GUIDELINES.

For terms & conditions and to verify this report, please visit [www.igi.org](http://www.igi.org)