



**ELECTRONIC COPY**

673408824  
Report verification at [igi.org](http://igi.org)



January 22, 2025

IGI Report Number **673408824**

Description **NATURAL DIAMOND**

Shape and Cutting Style **SQUARE EMERALD CUT**

Measurements **5.48 X 5.32 X 3.68 MM**

**GRADING RESULTS**

Carat Weight **1.02 CARAT**

Color Grade **J**

Clarity Grade **VVS 2**

Cut Grade **VERY GOOD**

**DIAMOND REPORT**

January 22, 2025

IGI Report Number **673408824**

Description **NATURAL DIAMOND**

Shape and Cutting Style **SQUARE EMERALD CUT**

Measurements **5.48 X 5.32 X 3.68 MM**

**GRADING RESULTS**

Carat Weight **1.02 CARAT**

Color Grade **J**

Clarity Grade **VVS 2**

Cut Grade **VERY GOOD**

**ADDITIONAL GRADING INFORMATION**

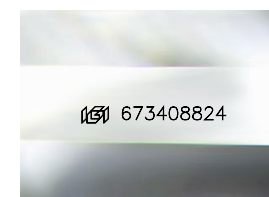
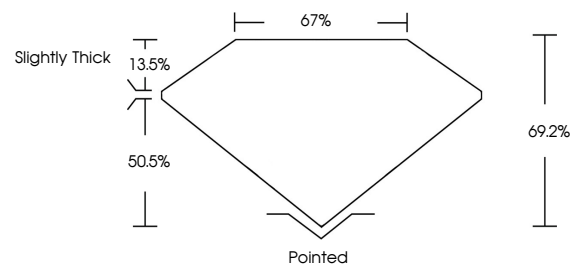
Polish **EXCELLENT**

Symmetry **EXCELLENT**

Fluorescence **VERY SLIGHT**

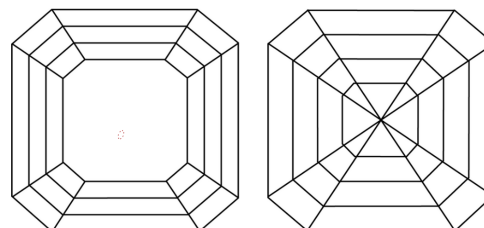
Inscription(s) **673408824**

**PROPORTIONS**



Sample Image Used

**CLARITY CHARACTERISTICS**



**KEY TO SYMBOLS**

Red symbols indicate internal characteristics.  
Green symbols indicate external characteristics.

**COLOR**

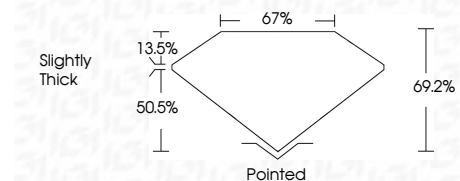
D - F      G - J      K - M      N - R      S - Z      FANCY

Colorless      Near Colorless      Slightly Tinted      Very Light Color      Light Color

**CLARITY**

IF      VVS <sup>1-2</sup>      VS <sup>1-2</sup>      SI <sup>1-2</sup>      I <sup>1-3</sup>

Internally Flawless      Very Very Slightly Included      Very Slightly Included      Slightly Included      Included



**ADDITIONAL GRADING INFORMATION**

Polish **EXCELLENT**

Symmetry **EXCELLENT**

Fluorescence **VERY SLIGHT**

Inscription(s) **673408824**



**IGI**



January 22, 2025  
IGI Report No. 673408824  
**SQUARE EMERALD CUT**  
5.48 X 5.32 X 3.68 MM

|                |             |
|----------------|-------------|
| Carat Weight   | 1.02 CARAT  |
| Color Grade    | J           |
| Clarity Grade  | VVS 2       |
| Cut Grade      | VERY GOOD   |
| Depth          | 69.2%       |
| Table          | 13.5%       |
| Grille         | 67%         |
| Culet          | Pointed     |
| Polish         | EXCELLENT   |
| Symmetry       | EXCELLENT   |
| Fluorescence   | VERY SLIGHT |
| Inscription(s) | 673408824   |