



**INTERNATIONAL  
GEMOLOGICAL  
INSTITUTE**

**DIAMOND REPORT**

April 4, 2025  
IGI Report Number **671482793**  
Description **NATURAL DIAMOND**  
Shape and Cutting Style **ROUND BRILLIANT**  
Measurements **5.83 - 5.87 X 3.69 MM**

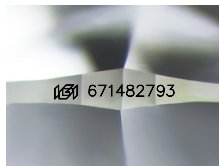
**GRADING RESULTS**

Carat Weight **0.78 CARAT**  
Color Grade **F**  
Clarity Grade **INTERNALLY FLAWLESS**  
Cut Grade **EXCELLENT**

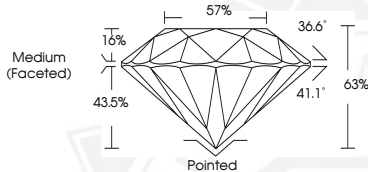
**ADDITIONAL GRADING INFORMATION**

Polish **EXCELLENT**  
Symmetry **EXCELLENT**  
Fluorescence **NONE**  
Inscription(s) **IGI 671482793**

**ELECTRONIC COPY**



Sample Image Used



April 4, 2025  
IGI Report Number **671482793**  
ROUND BRILLIANT  
NATURAL DIAMOND  
5.83 - 5.87 X 3.69 MM  
Carat Weight **0.78 CARAT**  
Color Grade **F**  
Clarity Grade **I.F.**  
Cut Grade **EXCELLENT**  
Polish **EXCELLENT**  
Symmetry **EXCELLENT**  
Fluorescence **NONE**  
Inscription(s) **IGI 671482793**



April 4, 2025  
IGI Report Number **671482793**  
ROUND BRILLIANT  
NATURAL DIAMOND  
5.83 - 5.87 X 3.69 MM  
Carat Weight **0.78 CARAT**  
Color Grade **F**  
Clarity Grade **I.F.**  
Cut Grade **EXCELLENT**  
Polish **EXCELLENT**  
Symmetry **EXCELLENT**  
Fluorescence **NONE**  
Inscription(s) **IGI 671482793**

THIS DOCUMENT WAS PRODUCED WITH THE FOLLOWING SECURITY MEASURES: SPECIAL DOCUMENT PAPER, INK SCREENS, WATERMARK, BACKGROUND DESIGN, HOLOGRAM AND OTHER SECURITY FEATURES NOT LISTED AND DO EXCEED DOCUMENT SECURITY INDUSTRY GUIDELINES.

For terms & conditions and to verify this report, please visit [www.igi.org](http://www.igi.org)