



ELECTRONIC COPY

671434773
Report verification at igi.org



January 8, 2025
IGI Report Number **671434773**
Description **NATURAL DIAMOND**
Shape and Cutting Style **SQUARE EMERALD CUT**
Measurements **5.45 X 5.39 X 3.62 MM**
GRADING RESULTS
Carat Weight **1.01 CARAT**
Color Grade **J**
Clarity Grade **INTERNALLY FLAWLESS**
Cut Grade **VERY GOOD**

DIAMOND REPORT

January 8, 2025
IGI Report Number **671434773**
Description **NATURAL DIAMOND**
Shape and Cutting Style **SQUARE EMERALD CUT**
Measurements **5.45 X 5.39 X 3.62 MM**

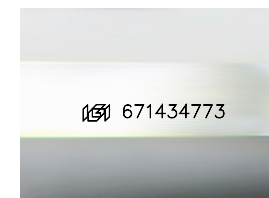
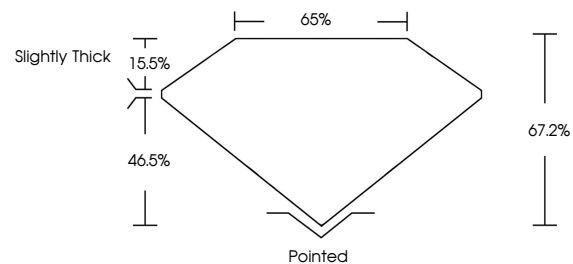
GRADING RESULTS

Carat Weight **1.01 CARAT**
Color Grade **J**
Clarity Grade **INTERNALLY FLAWLESS**
Cut Grade **VERY GOOD**

ADDITIONAL GRADING INFORMATION

Polish **EXCELLENT**
Symmetry **EXCELLENT**
Fluorescence **NONE**
Inscription(s) **671434773**

PROPORTIONS



Sample Image Used

CLARITY CHARACTERISTICS



KEY TO SYMBOLS

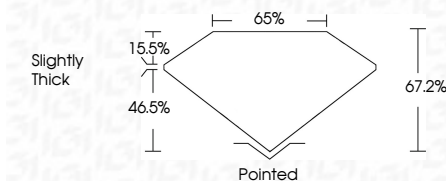
Red symbols indicate internal characteristics.
Green symbols indicate external characteristics.

COLOR

D - F	G - J	K - M	N - R	S - Z	FANCY
Colorless	Near Colorless	Slightly Tinted	Very Light Color	Light Color	

CLARITY

IF	VVS ¹⁻²	VS ¹⁻²	SI ¹⁻²	I ¹⁻³
Internally Flawless	Very Very Slightly Included	Very Slightly Included	Slightly Included	Included



ADDITIONAL GRADING INFORMATION

Polish **EXCELLENT**
Symmetry **EXCELLENT**
Fluorescence **NONE**
Inscription(s) **671434773**



IGI



January 8, 2025
IGI Report No. 671434773
SQUARE EMERALD CUT
5.45 X 5.39 X 3.62 MM
1.01 CARAT
J
VERY GOOD
67.2%
65%
Slightly Thick
Pointed
EXCELLENT
EXCELLENT
NONE
 671434773