



ELECTRONIC COPY

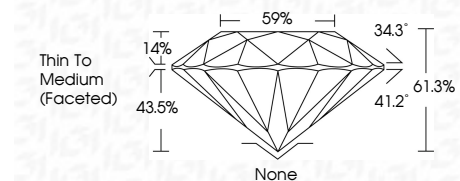
671421045
Report verification at igi.org



January 24, 2025
IGI Report Number **671421045**
Description **NATURAL DIAMOND**
Shape and Cutting Style **ROUND BRILLIANT**
Measurements **6.47 - 6.50 X 3.97 MM**

GRADING RESULTS

Carat Weight **1.02 CARAT**
Color Grade **J**
Clarity Grade **I1**
Cut Grade **EXCELLENT**



ADDITIONAL GRADING INFORMATION

Polish **VERY GOOD**
Symmetry **VERY GOOD**
Fluorescence **SLIGHT**
Inscription(s) **IGI 671421045**
Comments: IDEAL CUT ROUND BRILLIANT
Light Yellowish Green



IGI

January 24, 2025
IGI Report No 671421045
ROUND BRILLIANT
6.47 - 6.50 X 3.97 MM
1.02 CARAT
J
EXCELLENT
I1
61.3%
59%
Thin To Medium (Faceted)
None
VERY GOOD
VERY GOOD
SLIGHT
IGI 671421045
Comments: IDEAL CUT ROUND BRILLIANT
Light Yellowish Green

DIAMOND REPORT

January 24, 2025
IGI Report Number **671421045**
Description **NATURAL DIAMOND**
Shape and Cutting Style **ROUND BRILLIANT**
Measurements **6.47 - 6.50 X 3.97 MM**

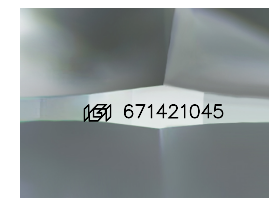
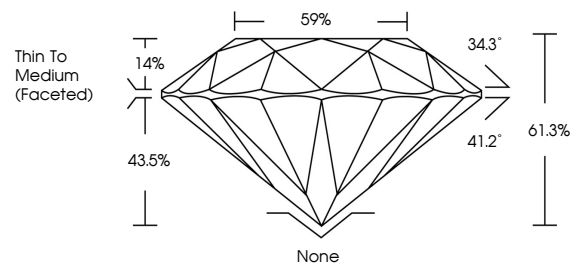
GRADING RESULTS

Carat Weight **1.02 CARAT**
Color Grade **J**
Clarity Grade **I1**
Cut Grade **EXCELLENT**

ADDITIONAL GRADING INFORMATION

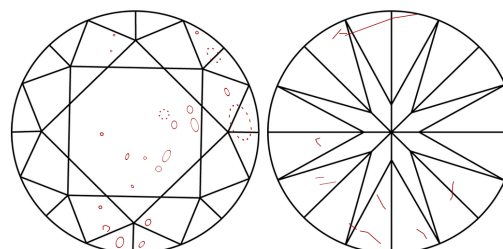
Polish **VERY GOOD**
Symmetry **VERY GOOD**
Fluorescence **SLIGHT**
Inscription(s) **IGI 671421045**
Comments: IDEAL CUT ROUND BRILLIANT
Light Yellowish Green

PROPORTIONS



Sample Image Used

CLARITY CHARACTERISTICS



KEY TO SYMBOLS

Red symbols indicate internal characteristics.
Green symbols indicate external characteristics.

COLOR

D - F	G - J	K - M	N - R	S - Z	FANCY
Colorless	Near Colorless	Slightly Tinted	Very Light Color	Light Color	

CLARITY

IF	VVS ¹⁻²	VS ¹⁻²	SI ¹⁻²	I ¹⁻³
Internally Flawless	Very Very Slightly Included	Very Slightly Included	Slightly Included	Included

