



ELECTRONIC COPY

DIAMOND REPORT

| | |
|-------------------------|-----------------------|
| June 4, 2025 | |
| IGI Report Number | 670479675 |
| Description | NATURAL DIAMOND |
| Shape and Cutting Style | ROUND BRILLIANT |
| Measurements | 7.86 - 7.89 X 4.89 MM |

GRADING RESULTS

| | |
|---------------|------------|
| Carat Weight | 1.90 CARAT |
| Color Grade | I |
| Clarity Grade | SI 1 |
| Cut Grade | EXCELLENT |

ADDITIONAL GRADING INFORMATION

| | |
|---------------------------------|--|
| Polish | EXCELLENT |
| Symmetry | EXCELLENT |
| Fluorescence | SLIGHT |
| Inscription(s) |  670479675 |
| Comments: Light Yellowish Green | |

670479675

Report verification at ig1.org

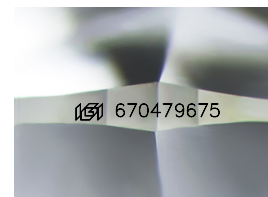
PROPORTIONS

Medium To Slightly Thick (Faceted)

Diagram illustrating the proportions of a diamond, showing the following measurements:

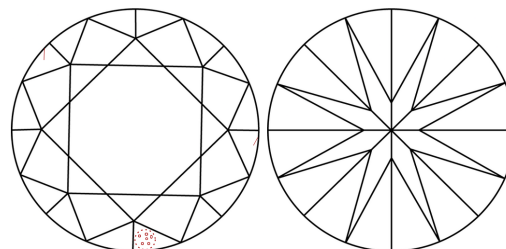
- Table: 59%
- Depth: 43.5%
- Girdle: 14.5%
- Crown Angle: 34.9°
- Pavilion Angle: 40.9°
- Height: 62.2%

The diagram also indicates the diamond is "Medium To Slightly Thick (Faceted)".



Sample Image Used

CLARITY CHARACTERISTICS



KEY TO SYMBOLS

Red symbols indicate internal characteristics.
Green symbols indicate external characteristics.

COLOR

| D - F | G - J | K - M | N - R | S - Z | FANCY |
|-----------|----------------|-----------------|------------------|-------------|-------|
| Colorless | Near Colorless | Slightly Tinted | Very Light Color | Light Color | |

CLARITY

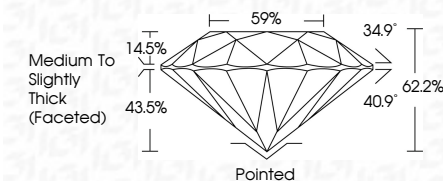
| IF | VVS ¹⁻² | VS ¹⁻² | SI ¹⁻² | I ¹⁻³ |
|---------------------|-----------------------------|------------------------|-------------------|------------------|
| Internally Flawless | Very Very Slightly Included | Very Slightly Included | Slightly Included | Included |



| | |
|-------------------------|-----------------------|
| June 4, 2025 | |
| IGI Report Number | 670479675 |
| Description | NATURAL DIAMOND |
| Shape and Cutting Style | ROUND BRILLIANT |
| Measurements | 7.86 - 7.89 X 4.89 MM |

GRADING RESULTS

| | |
|---------------|------------|
| Carat Weight | 1.90 CARAT |
| Color Grade | I |
| Clarity Grade | SI 1 |
| Cut Grade | EXCELLENT |



ADDITIONAL GRADING INFORMATION

| | |
|---------------------------------|---------------|
| Polish | EXCELLENT |
| Symmetry | EXCELLENT |
| Fluorescence | SLIGHT |
| Inscription(s) | (G) 670479675 |
| Comments: Light Yellowish Green | |



© IGI 2020, International Gemological Institute

FD - 10 20



THIS DOCUMENT WAS PRODUCED WITH THE FOLLOWING SECURITY MEASURES: SPECIAL DOCUMENT PAPER, INK SCREENS, WATERMARK, BACKGROUND DESIGNS, HOLOGRAM AND OTHER SECURITY FEATURES NOT LISTED AND DO EXCEED DOCUMENT SECURITY INDUSTRY GUIDELINE

| | |
|-------------------------|--------|
| June 4, 2005 | Med Th |
| GI Report No. 670479575 | |
| Color Grade | |
| Carat Weight | |
| 8.86 - 7.89 X 4.89 MM | |
| Color Grade | |
| Clarity Grade | |
| Cut Grade | |
| Depth | |
| Table | |
| Girdle | |
| Culet | |
| Polish | |
| Symmetry | |
| Fluorescence | |
| Inscription(s) | |
| Comments: | |
| Light Yellowish Green | |

www.igi.org