



ELECTRONIC COPY

DIAMOND REPORT

February 13, 2025	
IGI Report Number	670479107
Description	NATURAL DIAMOND
Shape and Cutting Style	ROUND BRILLIANT
Measurements	7.28 - 7.33 X 4.61 MM

GRADING RESULTS

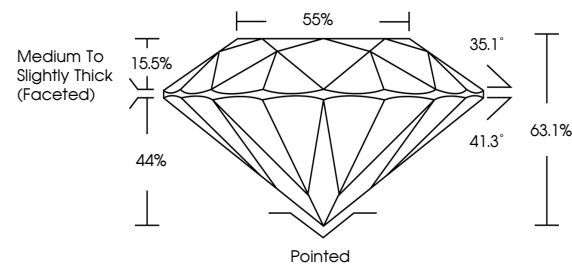
Carat Weight	1.51 CARAT
Color Grade	J
Clarity Grade	VS 1
Cut Grade	EXCELLENT

ADDITIONAL GRADING INFORMATION

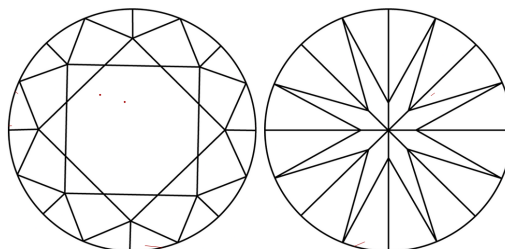
Polish	EXCELLENT
Symmetry	EXCELLENT
Fluorescence	NONE
Inscription(s)	151 670479107

670479107
Report verification at igi.org

PROPORTIONS

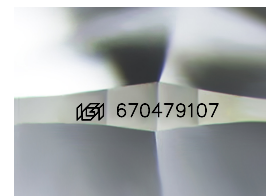


CLARITY CHARACTERISTICS



KEY TO SYMBOLS

Red symbols indicate internal characteristics.
Green symbols indicate external characteristics.



Sample Image Used

COLOR

D - F	G - J	K - M	N - R	S - Z	FANCY
Colorless	Near Colorless	Slightly Tinted	Very Light Color	Light Color	

CLARITY

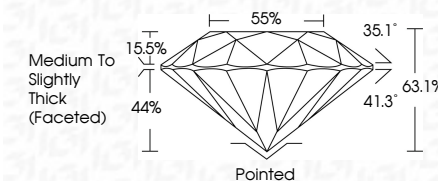
IF	VS ¹⁻²	VS ¹⁻²	SI ¹⁻²	I ¹⁻³
Internally Flawless	Very Very Slightly Included	Very Slightly Included	Slightly Included	Included



February 13, 2025	
IGI Report Number	670479107
Description	NATURAL DIAMOND
Shape and Cutting Style	ROUND BRILLIANT
Measurements	7.28 - 7.33 X 4.61 MM

GRADING RESULTS

Carat Weight	1.51 CARAT
Color Grade	J
Clarity Grade	VS 1
Cut Grade	EXCELLENT



ADDITIONAL GRADING INFORMATION

Polish	EXCELLENT
Symmetry	EXCELLENT
Fluorescence	NONE
Inscription(s)	1561 670479107



© IGI 2020, International Gemological Institute

FD - 10 20



THIS DOCUMENT WAS PRODUCED WITH THE FOLLOWING SECURITY MEASURES: SPECIAL DOCUMENT PAPER, INK SCREENS, WATERMARK, BACKGROUND DESIGNS, HOLOGRAM AND OTHER SECURITY FEATURES NOT LISTED AND DO EXCEED DOCUMENT SECURITY INDUSTRY GUIDELINE

www.igi.org

February 13, 2025
 IGI Report No 67047
 SOUND BRILLIANT

	ROUND BRILLIANT	
	28.76 - 7.33 X 4.61 MM	
	Carat Weight	1.51 CARAT
	Color Grade	J
	Clarity Grade	VS1
	Cut Grade	EXCELLENT
	Depth	63.1%
	Table	55%
	Graile	Medium To Slightly Thick Faceted
	Qulet	Poished
	Flnish	EXCELLENT
	Symmetry	EXCELLENT
	Flurrescence	NONE
	Laser Treatment	None Detected