



**ELECTRONIC COPY**

## DIAMOND REPORT

January 24, 2025	
IGI Report Number	670478947
Description	NATURAL DIAMOND
Shape and Cutting Style	ROUND BRILLIANT
Measurements	6.61 - 6.65 X 3.94 MM

## GRADING RESULTS

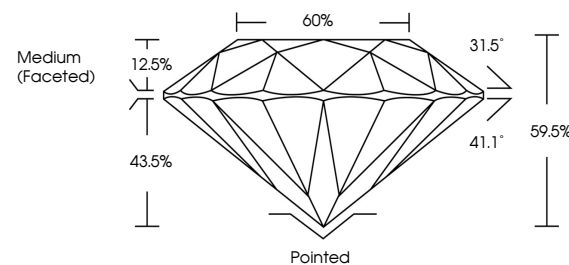
Carat Weight	1.05 CARAT
Color Grade	H
Clarity Grade	VVS 2
Cut Grade	EXCELLENT

### ADDITIONAL GRADING INFORMATION

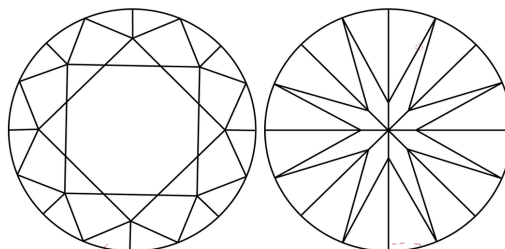
Polish	EXCELLENT
Symmetry	EXCELLENT
Fluorescence	NONE
Inscription(s)	151 670478947

670478947  
Report verification at [igi.org](http://igi.org)

## PROPORTIONS

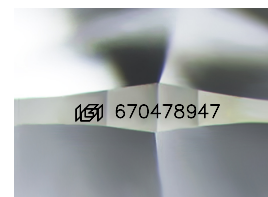


## CLARITY CHARACTERISTICS



## KEY TO SYMBOLS

Red symbols indicate internal characteristics.  
Green symbols indicate external characteristics.



Sample Image Used

**COLOR**

D - F	G - J	K - M	N - R	S - Z	FANCY
Colorless	Near Colorless	Slightly Tinted	Very Light Color	Light Color	

## CLARITY

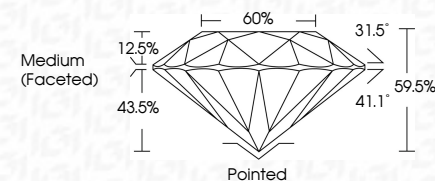
IF	VVS <sup>1-2</sup>	VS <sup>1-2</sup>	SI <sup>1-2</sup>	I <sup>1-3</sup>
Internally Flawless	Very Very Slightly Included	Very Slightly Included	Slightly Included	Included



January 24, 2025	
IGI Report Number	670478947
Description	NATURAL DIAMOND
Shape and Cutting Style	ROUND BRILLIANT
Measurements	6.61 - 6.65 X 3.94 MM

## GRADING RESULTS

Carat Weight	1.05 CARAT
Color Grade	H
Clarity Grade	VVS 2
Cut Grade	EXCELLENT



### ADDITIONAL GRADING INFORMATION

Polish	EXCELLENT
Symmetry	EXCELLENT
Fluorescence	NONE
Inscription(s)	1631 670478947



IG



© IGI 2020, International Gemological Institute

FD - 10 20



THIS DOCUMENT WAS PRODUCED WITH THE FOLLOWING SECURITY MEASURES: SPECIAL DOCUMENT PAPER, INK SCREENS, WATERMARK, BACKGROUND DESIGNS, HOLOGRAM AND OTHER SECURITY FEATURES NOT LISTED AND DO EXCEED DOCUMENT SECURITY INDUSTRY GUIDELINES

**www.igi.org**

January 24, 2025  
GI Report No 670478947  
ROUND BRILLIANT

1.05 CARAT	H	VVS 2	EXCELLENT	99.95%	60%	Medium (Faceted)	Pointed	EXCELLENT	EXCELLENT	NONE	None (7/10/2002)
Carat Weight	Color Grade	Clarity Grade	Depth	Table	Grade		Culet	Polish	Symmetry	Fluorescence	Comments