



**ELECTRONIC COPY**

## DIAMOND REPORT

January 7, 2025	
IGI Report Number	670478746
Description	NATURAL DIAMOND
Shape and Cutting Style	ROUND BRILLIANT
Measurements	8.07 - 8.11 X 5.07 MM

## GRADING RESULTS

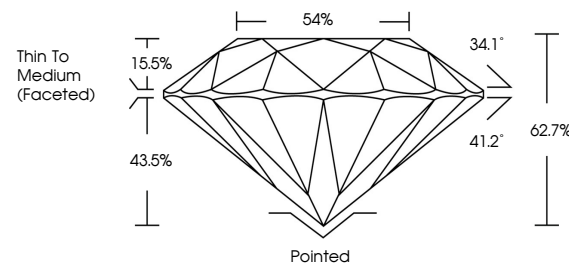
Carat Weight	2.01 CARATS
Color Grade	I
Clarity Grade	SI 2
Cut Grade	EXCELLENT

### ADDITIONAL GRADING INFORMATION

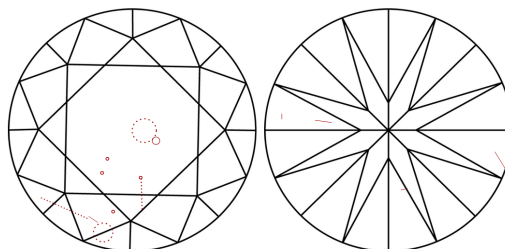
Polish	EXCELLENT
Symmetry	EXCELLENT
Fluorescence	STRONG
Inscription(s)	131 670478746

670478746  
Report verification at [igi.org](http://igi.org)

## PROPORTIONS

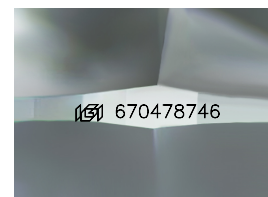


## CLARITY CHARACTERISTICS



## KEY TO SYMBOLS

Red symbols indicate internal characteristics.  
Green symbols indicate external characteristics.



Sample Image Used

**COLOR**

D - F	G - J	K - M	N - R	S - Z	FANCY
Colorless	Near Colorless	Slightly Tinted	Very Light Color	Light Color	

## CLARITY

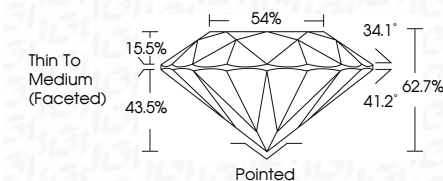
IF	VVS <sup>1-2</sup>	VS <sup>1-2</sup>	SI <sup>1-2</sup>	I <sup>1-3</sup>
Internally Flawless	Very Very Slightly Included	Very Slightly Included	Slightly Included	Included



January 7, 2025	
IGI Report Number	670478746
Description	NATURAL DIAMOND
Shape and Cutting Style	ROUND BRILLIANT
Measurements	8.07 - 8.11 X 5.07 MM

## GRADING RESULTS

Carat Weight	2.01 CARATS
Color Grade	I
Clarity Grade	SI 2
Cut Grade	EXCELLENT



### ADDITIONAL GRADING INFORMATION

Polish	EXCELLENT
Symmetry	EXCELLENT
Fluorescence	STRONG
Inscription(s)	163 670478746



© IGI 2020, International Gemological Institute

FD - 10 20



THIS DOCUMENT WAS PRODUCED WITH THE FOLLOWING SECURITY MEASURES: SPECIAL DOCUMENT PAPER, INK SCREENS, WATERMARK, BACKGROUND DESIGNS, HOLOGRAM AND OTHER SECURITY FEATURES NOT LISTED AND DO EXCEED DOCUMENT SECURITY INDUSTRY GUIDELINES

**www.igi.org**

January 7, 2005

January 7, 2025  
GI Report No 670478746  
DOLIND BRILLANT

3.07 - 8.11 X 5.07 MM  
2.01 CARATS

Catal Weight	201 Carats
Color Grade	I
Clarity Grade	S12

Clarity Grade	S12
Cut Grade	EXCELLENT
Depth	62.7%

	54%
Table	
Girdle	
Thin To Medium (Emmett)	

	Culet	Pointed (Faceted)
Excellent	100%	100%
Very Good	100%	100%
Good	100%	100%
Fair	100%	100%
Poor	100%	100%

Polish	EXCELLENT
Symmetry	EXCELLENT
Fluorescence	STRONG

Inscription(s) **(91) 670478746**