



**ELECTRONIC COPY**

668457841  
Report verification at igi.org

**DIAMOND REPORT**

July 11, 2025  
IGI Report Number **668457841**  
Description **NATURAL DIAMOND**  
Shape and Cutting Style **ROUND BRILLIANT**  
Measurements **9.05 - 9.09 X 5.77 MM**

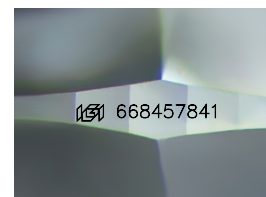
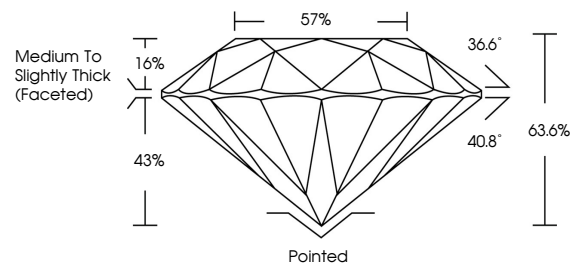
**GRADING RESULTS**

Carat Weight **3.01 CARATS**  
Color Grade **H**  
Clarity Grade **INTERNALLY FLAWLESS**  
Cut Grade **EXCELLENT**

**ADDITIONAL GRADING INFORMATION**

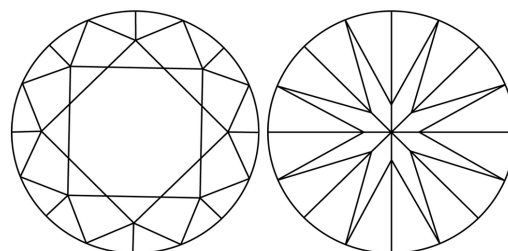
Polish **EXCELLENT**  
Symmetry **EXCELLENT**  
Fluorescence **NONE**  
Inscription(s) **668457841**

**PROPORTIONS**



Sample Image Used

**CLARITY CHARACTERISTICS**



**KEY TO SYMBOLS**

Red symbols indicate internal characteristics.  
Green symbols indicate external characteristics.

**COLOR**

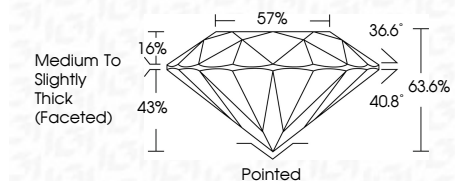
D - F	G - J	K - M	N - R	S - Z	FANCY
Colorless	Near Colorless	Slightly Tinted	Very Light Color	Light Color	

**CLARITY**

IF	VVS <sup>1-2</sup>	VS <sup>1-2</sup>	SI <sup>1-2</sup>	I <sup>1-3</sup>
Internally Flawless	Very Very Slightly Included	Very Slightly Included	Slightly Included	Included



July 11, 2025  
IGI Report Number **668457841**  
Description **NATURAL DIAMOND**  
Shape and Cutting Style **ROUND BRILLIANT**  
Measurements **9.05 - 9.09 X 5.77 MM**  
**GRADING RESULTS**  
Carat Weight **3.01 CARATS**  
Color Grade **H**  
Clarity Grade **INTERNALLY FLAWLESS**  
Cut Grade **EXCELLENT**



**ADDITIONAL GRADING INFORMATION**

Polish **EXCELLENT**  
Symmetry **EXCELLENT**  
Fluorescence **NONE**  
Inscription(s) **668457841**



**IGI**

July 11, 2025  
IGI Report No. 668457841  
**ROUND BRILLIANT**  
3.01 CARATS  
Color Grade **H**  
Clarity Grade **IF**  
Depth **EXCELLENT**  
Table **63.6%**  
Girdle **57%**  
Medium To Slightly Thick (Faceted)  
Culet **Pointed**  
Polish **EXCELLENT**  
Symmetry **EXCELLENT**  
Fluorescence **NONE**  
Inscriptions(s) 668457841