



ELECTRONIC COPY

DIAMOND REPORT

April 10, 2025	
IGI Report Number	665428166
Description	NATURAL DIAMOND
Shape and Cutting Style	ROUND BRILLIANT
Measurements	7.34 - 7.41 X 4.49 MM

GRADING RESULTS

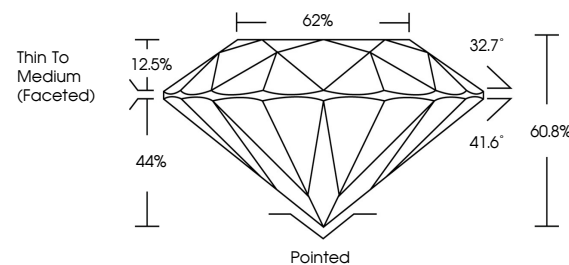
Carat Weight	1.50 CARAT
Color Grade	I
Clarity Grade	SI 2
Cut Grade	EXCELLENT

ADDITIONAL GRADING INFORMATION

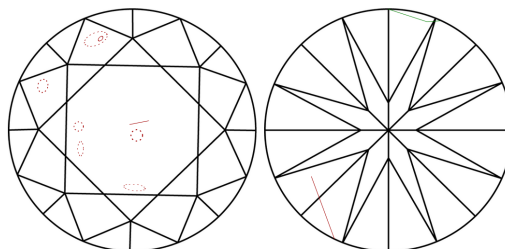
Polish	EXCELLENT
Symmetry	EXCELLENT
Fluorescence	VERY SLIGHT
Inscription(s)	131 665428166

665428166
Report verification at lgi.org

PROPORTIONS

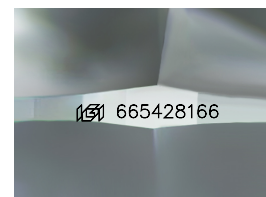


CLARITY CHARACTERISTICS



KEY TO SYMBOLS

Red symbols indicate internal characteristics.
Green symbols indicate external characteristics.



Sample Image Used

COLOR

D - F	G - J	K - M	N - R	S - Z	FANCY
Colorless	Near Colorless	Slightly Tinted	Very Light Color	Light Color	

CLARITY

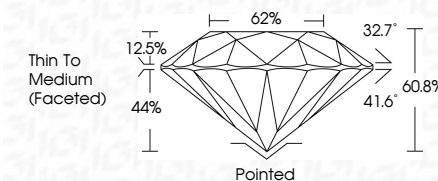
IF	VS ¹⁻²	VS ¹⁻²	SI ¹⁻²	I ¹⁻³
Internally Flawless	Very Very Slightly Included	Very Slightly Included	Slightly Included	Included



April 10, 2025	
IGI Report Number	665428166
Description	NATURAL DIAMOND
Shape and Cutting Style	ROUND BRILLIANT
Measurements	7.34 - 7.41 X 4.49 MM

GRADING RESULTS

Carat Weight	1.50 CARAT
Color Grade	I
Clarity Grade	SI 2
Cut Grade	EXCELLENT



ADDITIONAL GRADING INFORMATION

Polish	EXCELLENT
Symmetry	EXCELLENT
Fluorescence	VERY SLIGHT
Inscription(s)	(18) 665428166



© IGI 2020, International Gemological Institute

FD - 10 20

www.igi.org



THIS DOCUMENT WAS PRODUCED WITH THE FOLLOWING SECURITY MEASURES: SPECIAL DOCUMENT PAPER, INK SCREENS, WATERMARK, BACKGROUND DESIGNS, HOLOGRAM AND OTHER SECURITY FEATURES NOT LISTED AND DO EXCEED DOCUMENT SECURITY INDUSTRY GUIDELINE

April 10, 2025
GI Report No 665428166
ROUND BRILLIANT

	S I 2	Pinked
Cut Grade	EXCELLENT	EXCELLENT
Diamond Weight	60.1%	EXCELLENT
Table	62%	VERY SLIGHT IMPERFECTIONS
Girdle	Thin To Medium (Faceted)	(see #95829145)
Polish		
Symmetry		
Fluorescence		
Comments:		