



ELECTRONIC COPY

665404579
Report verification at igi.org



July 10, 2025
IGI Report Number **665404579**
Description **NATURAL DIAMOND**
Shape and Cutting Style **EMERALD CUT**
Measurements **14.05 X 10.00 X 7.00 MM**
GRADING RESULTS
Carat Weight **10.07 CARATS**
Color Grade **I**
Clarity Grade **VS 2**
Cut Grade **VERY GOOD**

DIAMOND REPORT

July 10, 2025
IGI Report Number **665404579**
Description **NATURAL DIAMOND**
Shape and Cutting Style **EMERALD CUT**
Measurements **14.05 X 10.00 X 7.00 MM**

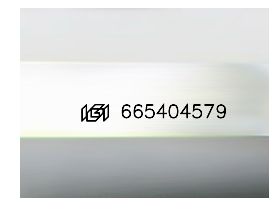
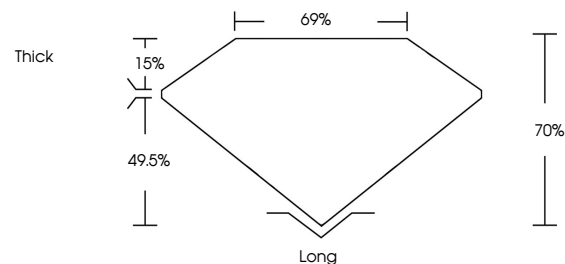
GRADING RESULTS

Carat Weight **10.07 CARATS**
Color Grade **I**
Clarity Grade **VS 2**
Cut Grade **VERY GOOD**

ADDITIONAL GRADING INFORMATION

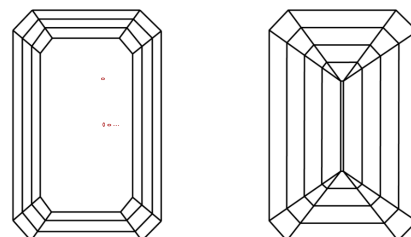
Polish **EXCELLENT**
Symmetry **EXCELLENT**
Fluorescence **NONE**
Inscription(s) **665404579**

PROPORTIONS



Sample Image Used

CLARITY CHARACTERISTICS



KEY TO SYMBOLS

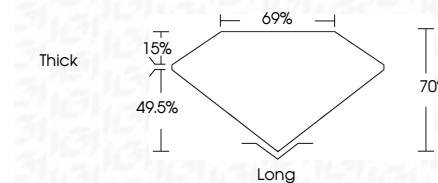
Red symbols indicate internal characteristics.
Green symbols indicate external characteristics.

COLOR

D - F	G - J	K - M	N - R	S - Z	FANCY
Colorless	Near Colorless	Slightly Tinted	Very Light Color	Light Color	

CLARITY

IF	VVS ¹⁻²	VS ¹⁻²	SI ¹⁻²	I ¹⁻³
Internally Flawless	Very Very Slightly Included	Very Slightly Included	Slightly Included	Included



ADDITIONAL GRADING INFORMATION

Polish **EXCELLENT**
Symmetry **EXCELLENT**
Fluorescence **NONE**
Inscription(s) **665404579**



IGI



July 10, 2025	IGI Report No. 665404579	14.05 X 10.00 X 7.00 MM	10.07 CARATS	I	VS 2	70%	69%	Thick	Long	EXCELLENT	EXCELLENT	NONE	665404579
EMERALD CUT					VERY GOOD								
Carat Weight	Color Grade	Clarity Grade	Depth	Table	Girdle	Culet	Polish	Symmetry	Fluorescence	Inscription(s)			