



**ELECTRONIC COPY**

## DIAMOND REPORT

November 27, 2024	
IGI Report Number	662420142
Description	NATURAL DIAMOND
Shape and Cutting Style	ROUND BRILLIANT
Measurements	8.89 - 8.96 X 5.52 MM

## GRADING RESULTS

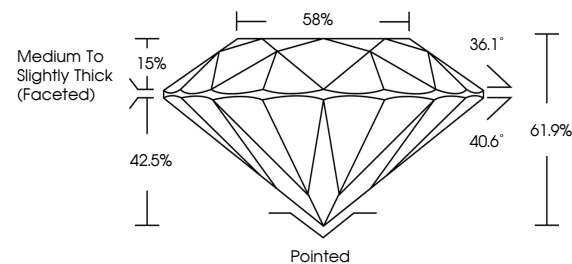
Carat Weight	2.72 CARATS
Color Grade	H
Clarity Grade	SI 1
Cut Grade	EXCELLENT

### ADDITIONAL GRADING INFORMATION

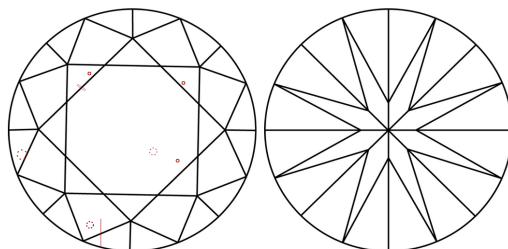
Polish	EXCELLENT
Symmetry	EXCELLENT
Fluorescence	NONE
Inscription(s)	 662420142
Comments: IDEAL CUT ROUND BRILLIANT	

662420142  
Report verification at lgi.org

## PROPORTIONS

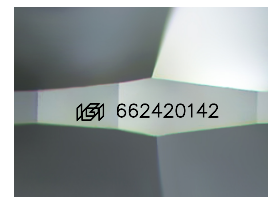


## CLARITY CHARACTERISTICS



## KEY TO SYMBOLS

Red symbols indicate internal characteristics.  
Green symbols indicate external characteristics.



Sample Image Used

**COLOR**

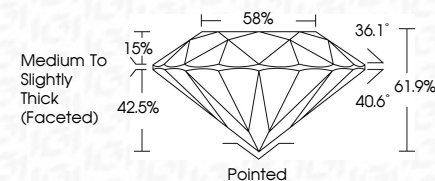
D - F	G - J	K - M	N - R	S - Z	FANCY
Colorless	Near Colorless	Slightly Tinted	Very Light Color	Light Color	

## CLARITY

IF	VVS <sup>1-2</sup>	VS <sup>1-2</sup>	SI <sup>1-2</sup>	I <sup>1-3</sup>
Internally Flawless	Very Very Slightly Included	Very Slightly Included	Slightly Included	Included



November 27, 2024	
IGI Report Number	662420142
Description	NATURAL DIAMOND
Shape and Cutting Style	ROUND BRILLIANT
Measurements	8.89 - 8.96 X 5.52 MM
GRADING RESULTS	
Carat Weight	2.72 CARATS
Color Grade	H
Clarity Grade	SI 1
Cut Grade	EXCELLENT



### ADDITIONAL GRADING INFORMATION

Polish	EXCELLENT
Symmetry	EXCELLENT
Fluorescence	NONE
Inscription(s)	(G) 662420142
Comments: IDEAL CUT ROUND BRILLIANT	



IG



© IGI 2020, International Gemological Institute

FD - 10 20

**www.igi.org**



THIS DOCUMENT WAS PRODUCED WITH THE FOLLOWING SECURITY MEASURES: SPECIAL DOCUMENT PAPER, INK SCREENS, WATERMARK, BACKGROUND DESIGNS, HOLOGRAM AND OTHER SECURITY FEATURES NOT LISTED AND DO EXCEED DOCUMENT SECURITY INDUSTRY GUIDELINES

November 27, 2024  
IGI Report No 662420142  
ROUND BRILLIANT

6.89 - 8.95 X 5.52 MM	2.72 CARATS	H	\$1	EXCELLENT	61.0%	59%	Medium to Slightly Thick (Faceted)	Polished	EXCELLENT	EXCELLENT	NONE	see 6/20/21/12
Carat Weight			Clarity Grade	Cut Grade	Depth	Table	Grade	Culet	Symmetry	Fluorescence	Inclusions (c)	
Color Grade								Polish				

**Comments:**  
**IDEAL CUT ROUND BRILLIANT**