



# INTERNATIONAL GEMOLOGICAL INSTITUTE

ELECTRONIC COPY

659450943



December 6, 2024

IGI Report Number 659450943  
ROUND BRILLIANT  
NATURAL DIAMOND

5.14 - 5.16 X 3.16 MM  
Carat Weight 0.52 CARAT  
Color Grade K  
Clarity Grade SI 1  
Cut Grade EXCELLENT  
Polish EXCELLENT  
Symmetry EXCELLENT  
Fluorescence VERY SLIGHT  
Inscription(s) IGI 659450943  
Comments: IDEAL CUT ROUND  
BRILLIANT

## DIAMOND REPORT

December 6, 2024

IGI Report Number

659450943

Description

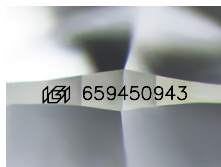
NATURAL DIAMOND

Shape and Cutting Style

ROUND BRILLIANT

Measurements

5.14 - 5.16 X 3.16 MM



Sample Image Used

## GRADING RESULTS

Carat Weight 0.52 CARAT  
Color Grade K  
Clarity Grade SI 1  
Cut Grade EXCELLENT

## ADDITIONAL GRADING INFORMATION

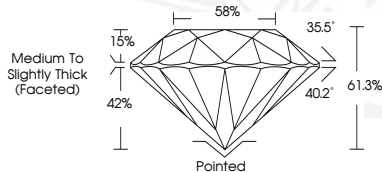
Polish EXCELLENT  
Symmetry EXCELLENT  
Fluorescence VERY SLIGHT  
Identification Features FEATHER, CRYSTAL  
Inscription(s) IGI 659450943  
Comments: IDEAL CUT ROUND BRILLIANT



December 6, 2024

IGI Report Number 659450943  
ROUND BRILLIANT  
NATURAL DIAMOND

5.14 - 5.16 X 3.16 MM  
Carat Weight 0.52 CARAT  
Color Grade K  
Clarity Grade SI 1  
Cut Grade EXCELLENT  
Polish EXCELLENT  
Symmetry EXCELLENT  
Fluorescence VERY SLIGHT  
Inscription(s) IGI 659450943  
Comments: IDEAL CUT ROUND  
BRILLIANT



THIS DOCUMENT WAS PRODUCED WITH THE FOLLOWING SECURITY MEASURES: SPECIAL DOCUMENT PAPER, INK SCREENS, WATERMARK, BACKGROUND DESIGNS, HOLOGRAM AND OTHER SECURITY FEATURES NOT LISTED AND DO EXCEED DOCUMENT SECURITY INDUSTRY GUIDELINES.

For terms & conditions and to verify this report, please visit [www.igi.org](http://www.igi.org)