



# INTERNATIONAL GEMOLOGICAL INSTITUTE

ELECTRONIC COPY

659450931



December 9, 2024

IGI Report Number 659450931

ROUND BRILLIANT

NATURAL DIAMOND

5.21 - 5.24 X 3.26 MM

Carat Weight 0.55 CARAT

Color Grade E

Clarity Grade SI 1

Cut Grade EXCELLENT

Polish EXCELLENT

Symmetry EXCELLENT

Fluorescence SLIGHT

Inscription(s) IGI 659450931

Comments: IDEAL CUT ROUND  
BRILLIANT

## DIAMOND REPORT

December 9, 2024

IGI Report Number

659450931

Description

NATURAL DIAMOND

Shape and Cutting Style

ROUND BRILLIANT

Measurements

5.21 - 5.24 X 3.26 MM

## GRADING RESULTS

Carat Weight 0.55 CARAT

Color Grade E

Clarity Grade SI 1

Cut Grade EXCELLENT

## ADDITIONAL GRADING INFORMATION

Polish EXCELLENT

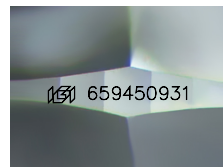
Symmetry EXCELLENT

Fluorescence SLIGHT

Identification Features FEATHER, CLOUD

Inscription(s) IGI 659450931

Comments: IDEAL CUT ROUND BRILLIANT



Sample Image Used



December 9, 2024

IGI Report Number 659450931

ROUND BRILLIANT

NATURAL DIAMOND

5.21 - 5.24 X 3.26 MM

Carat Weight 0.55 CARAT

Color Grade E

Clarity Grade SI 1

Cut Grade EXCELLENT

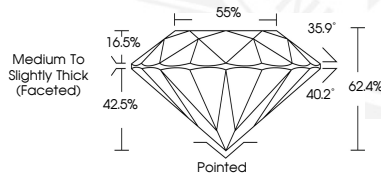
Polish EXCELLENT

Symmetry EXCELLENT

Fluorescence SLIGHT

Inscription(s) IGI 659450931

Comments: IDEAL CUT ROUND  
BRILLIANT



THIS DOCUMENT WAS PRODUCED WITH THE FOLLOWING SECURITY MEASURES: SPECIAL DOCUMENT PAPER, INK SCREENS, WATERMARK, BACKGROUND DESIGNS, HOLOGRAM AND OTHER SECURITY FEATURES NOT LISTED AND DO EXCEED DOCUMENT SECURITY INDUSTRY GUIDELINES.

For terms & conditions and to verify this report, please visit [www.igi.org](http://www.igi.org)