



ELECTRONIC COPY

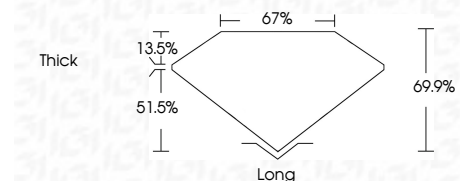
657452119
Report verification at igi.org



October 21, 2024
IGI Report Number **657452119**
Description **NATURAL DIAMOND**
Shape and Cutting Style **EMERALD CUT**
Measurements **6.91 X 5.01 X 3.50 MM**

GRADING RESULTS

Carat Weight **1.23 CARAT**
Color Grade **L**
Clarity Grade **VS 1**
Cut Grade **VERY GOOD**



ADDITIONAL GRADING INFORMATION

Polish **EXCELLENT**
Symmetry **EXCELLENT**
Fluorescence **NONE**
Inscription(s) **IGI 657452119**



IGI

October 21, 2024
IGI Report No 657452119
EMERALD CUT
1.23 CARAT **L**
6.91 X 5.01 X 3.50 MM
Color Grade **L**
Clarity Grade **VS 1**
Depth **61.5%**
Table **67%**
Girdle **67%**
Thick
Long **EXCELLENT**
Polish **EXCELLENT**
Symmetry **EXCELLENT**
Fluorescence **NONE**
Inscription(s) **IGI 657452119**

DIAMOND REPORT

October 21, 2024
IGI Report Number **657452119**
Description **NATURAL DIAMOND**
Shape and Cutting Style **EMERALD CUT**
Measurements **6.91 X 5.01 X 3.50 MM**

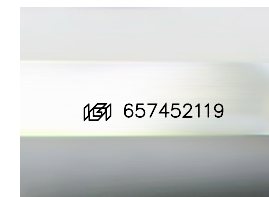
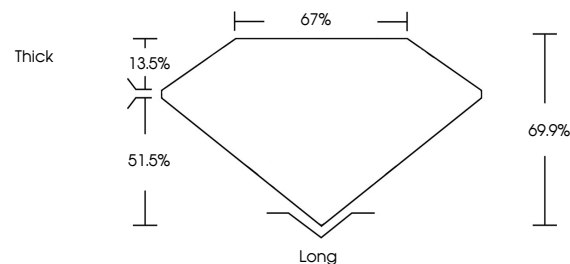
GRADING RESULTS

Carat Weight **1.23 CARAT**
Color Grade **L**
Clarity Grade **VS 1**
Cut Grade **VERY GOOD**

ADDITIONAL GRADING INFORMATION

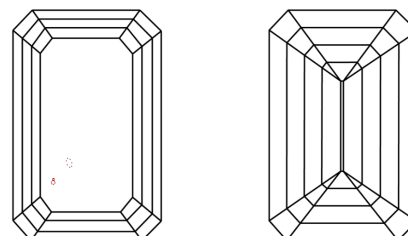
Polish **EXCELLENT**
Symmetry **EXCELLENT**
Fluorescence **NONE**
Inscription(s) **IGI 657452119**

PROPORTIONS



Sample Image Used

CLARITY CHARACTERISTICS



KEY TO SYMBOLS

Red symbols indicate internal characteristics.
Green symbols indicate external characteristics.

COLOR

| D - F | G - J | K - M | N - R | S - Z | FANCY |
|-----------|----------------|-----------------|------------------|-------------|-------|
| Colorless | Near Colorless | Slightly Tinted | Very Light Color | Light Color | |

CLARITY

| IF | VS ¹⁻² | VS ¹⁻² | SI ¹⁻² | I ¹⁻³ |
|---------------------|-----------------------------|------------------------|-------------------|------------------|
| Internally Flawless | Very Very Slightly Included | Very Slightly Included | Slightly Included | Included |

