



ELECTRONIC COPY

654480105
Report verification at igi.org

DIAMOND REPORT

October 9, 2024
IGI Report Number **654480105**
Description **NATURAL DIAMOND**
Shape and Cutting Style **EMERALD CUT**
Measurements **10.21 X 7.35 X 4.99 MM**

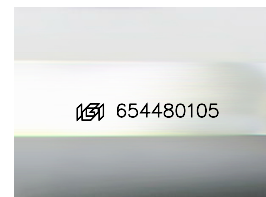
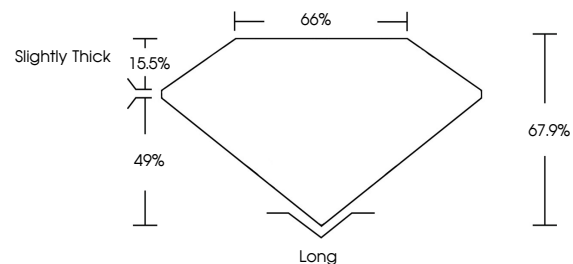
GRADING RESULTS

Carat Weight **3.71 CARATS**
Color Grade **I**
Clarity Grade **VVS 1**
Cut Grade **EXCELLENT**

ADDITIONAL GRADING INFORMATION

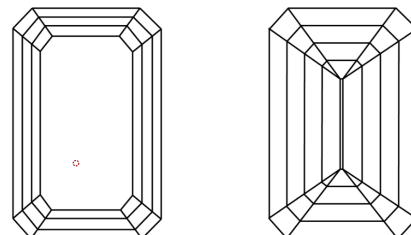
Polish **EXCELLENT**
Symmetry **EXCELLENT**
Fluorescence **NONE**
Inscription(s) **654480105**

PROPORTIONS



Sample Image Used

CLARITY CHARACTERISTICS



KEY TO SYMBOLS

Red symbols indicate internal characteristics.
Green symbols indicate external characteristics.

COLOR

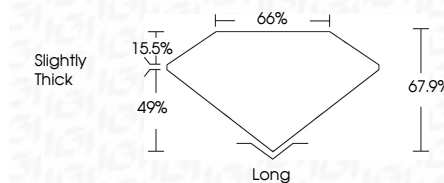
D - F	G - J	K - M	N - R	S - Z	FANCY
Colorless	Near Colorless	Slightly Tinted	Very Light Color	Light Color	

CLARITY

IF	VS ¹⁻²	VS ¹⁻²	SI ¹⁻²	I ¹⁻³
Internally Flawless	Very Very Slightly Included	Very Slightly Included	Slightly Included	Included



October 9, 2024
IGI Report Number **654480105**
Description **NATURAL DIAMOND**
Shape and Cutting Style **EMERALD CUT**
Measurements **10.21 X 7.35 X 4.99 MM**
GRADING RESULTS
Carat Weight **3.71 CARATS**
Color Grade **I**
Clarity Grade **VVS 1**
Cut Grade **EXCELLENT**



ADDITIONAL GRADING INFORMATION

Polish **EXCELLENT**
Symmetry **EXCELLENT**
Fluorescence **NONE**
Inscription(s) **654480105**



IGI

October 9, 2024
IGI Report No. 654480105
EMERALD CUT
10.21 X 7.35 X 4.99 MM
3.71 CARATS
I
VVS 1
EXCELLENT
67.9%
66%
Slightly Thick
Long
EXCELLENT
EXCELLENT
NONE
IGI 654480105