



ELECTRONIC COPY

654416829
Report verification at igi.org



December 26, 2024

IGI Report Number **654416829**

Description **NATURAL DIAMOND**

Shape and Cutting Style **ROUND BRILLIANT**

Measurements **7.03 - 7.07 X 4.32 MM**

GRADING RESULTS

Carat Weight **1.32 CARAT**

Color Grade **J**

Clarity Grade **VS 1**

Cut Grade **EXCELLENT**

DIAMOND REPORT

December 26, 2024

IGI Report Number **654416829**

Description **NATURAL DIAMOND**

Shape and Cutting Style **ROUND BRILLIANT**

Measurements **7.03 - 7.07 X 4.32 MM**

GRADING RESULTS

Carat Weight **1.32 CARAT**

Color Grade **J**

Clarity Grade **VS 1**

Cut Grade **EXCELLENT**

ADDITIONAL GRADING INFORMATION

Polish **EXCELLENT**

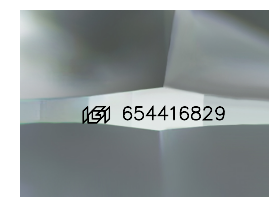
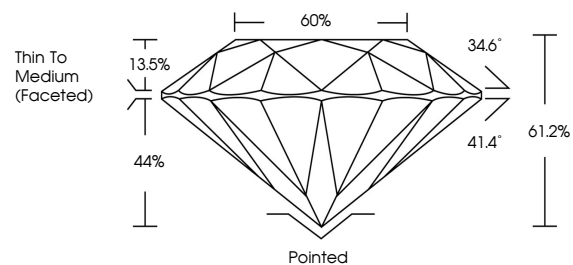
Symmetry **EXCELLENT**

Fluorescence **NONE**

Inscription(s) **654416829**

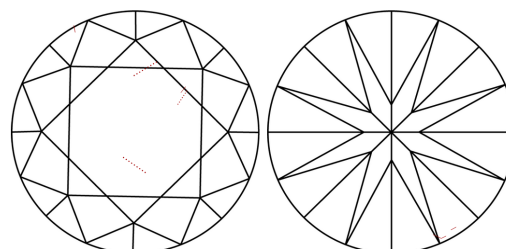
Comments: IDEAL CUT ROUND BRILLIANT

PROPORTIONS



Sample Image Used

CLARITY CHARACTERISTICS



KEY TO SYMBOLS

Red symbols indicate internal characteristics.
Green symbols indicate external characteristics.

COLOR

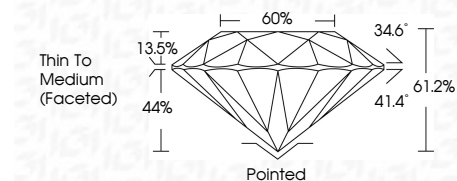
D - F G - J K - M N - R S - Z FANCY

Colorless Near Colorless Slightly Tinted Very Light Color Light Color

CLARITY

IF VS ¹⁻² VS ¹⁻² SI ¹⁻² I ¹⁻³

Internally Flawless Very Very Slightly Included Very Slightly Included Slightly Included Included



ADDITIONAL GRADING INFORMATION

Polish **EXCELLENT**

Symmetry **EXCELLENT**

Fluorescence **NONE**

Inscription(s) **654416829**

Comments: IDEAL CUT ROUND BRILLIANT



IGI



December 26, 2024	IGI Report No 654416829	ROUND BRILLIANT	1.32 CARAT	J	VS 1	EXCELLENT	61.2%	60%	Thin To Medium (Faceted)	Pointed	EXCELLENT	EXCELLENT	NONE	654416829
Carat Weight	Color Grade	Clarity Grade	Depth	Table	Grade	Culet	Polish	Symmetry	Fluorescence	Inscription(s)	Comments:	IDEAL CUT ROUND BRILLIANT		